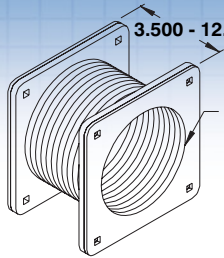


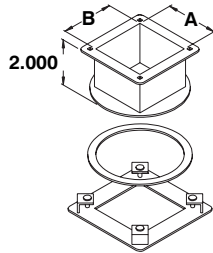
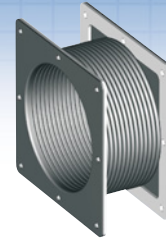
NEMA 12-13 WIREWAY ACCESSORIES



Flexible fitting

CATALOG NUMBER	DIMENSIONS	
	A	
1412 FF2003	2.500	
1412 FF4003	4.000	
1412 FF6003	6.000	
1412 FF8003	8.000	

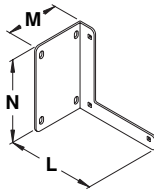
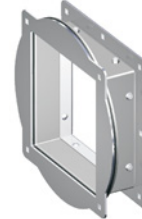
Features :
 - Joining gasket
 - Carriage bolts
 - Anti-vibration hardware



Swivel nipple (2")

CATALOG NUMBER	DIMENSIONS	
	A	B
1412 SN2002	2.500	2.500
1412 SN4002	4.000	4.000
1412 SN6002	6.000	6.000
1412 SN8002	8.000	8.000

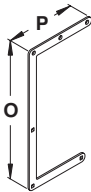
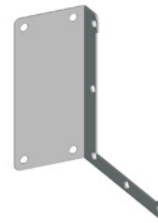
Features :
 - Joining gasket
 - Carriage bolts
 - Anti-vibration hardware
 - Powder coating



Bracket hanger

CATALOG NUMBER	DIMENSIONS		
	M	N	L
1500 BH2069	3.625	3.875	4.625
1500 BH4069	3.625	5.375	6.125
1500 BH6069	3.625	7.625	8.250
1500 BH8069	3.625	9.625	10.250
1500 BH12069	--	--	--

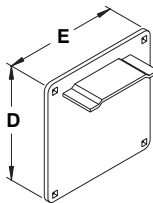
Note :
 Bracket hangers are usually used to attach wireway runs to a wall, floor or ceiling. If you require overhead beam mounting see hanger below.



Drop hanger

CATALOG NUMBER	DIMENSIONS			
	A	B	O	P
1500 DH2068	2.500	2.500	9.250	4.500
1500 DH4068	4.000	4.000	11.750	6.000
1500 DH6068	6.000	6.000	15.520	8.125
1500 DH8068	8.000	8.000	20.562	12.125
1500 DH12068	12.000	6.000	--	--

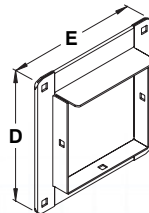
Note :
 Drop hangers are used to attach wireway runs to an overhead beam. If you require wall or floor mounting, see hanger above.



Closing plate

CATALOG NUMBER	DIMENSIONS			
	A	B	D	E
1500 CP2070	2.500	2.500	3.875	3.875
1500 CP4070	4.000	4.000	5.375	5.375
1500 CP6070	6.000	6.000	7.625	7.625
1500 CP8070	8.000	8.000	9.625	9.625
1500 CP12070	12.000	6.000	7.625	13.625

Note :
 These gasketed closing plates are installed after all wire are in place to ensure a complete seal of the wireway system.



Box connector

CATALOG NUMBER	DIMENSIONS			
	A	B	D	E
1500 BC2067	2.500	2.500	3.875	3.875
1500 BC4067	4.000	4.000	5.375	5.375
1500 BC6067	6.000	6.000	7.625	7.625
1500 BC8067	8.000	8.000	9.625	9.625
1500 BC12067	12.000	6.000	7.625	13.625

Note :
 These gasket box connectors should be used in conjunction with EXM enclosures to ensure a complete seal of the system.



Data subject to change without notice.