

Top cover fan tray (ultra low noise)

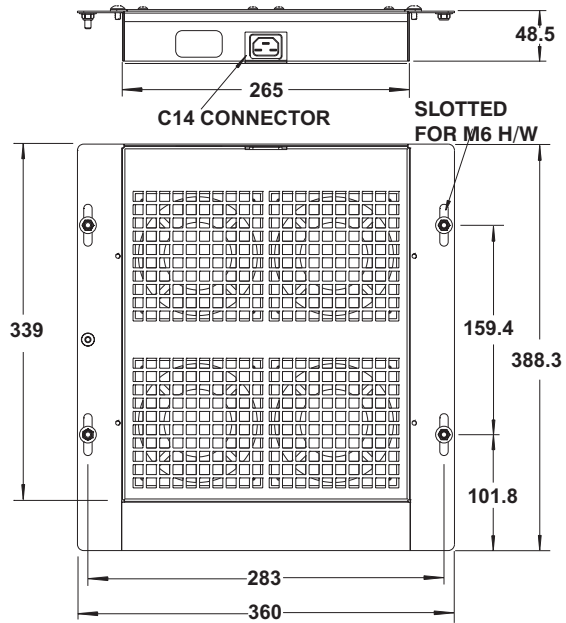
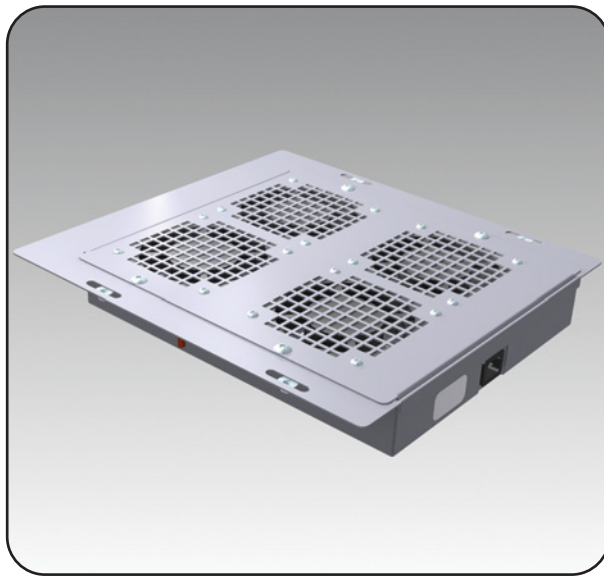
The **6500 MXFT ultra low noise top cover fan tray** is installed on the top or bottom of a 600mm wide or more Mtrx cabinet. In order to install on top one must order the cable entry top cover (6500 MXTC) and replace two gland plates by the tray. For an installation on the bottom, 600mm wide cabinets only, simply

remove and replace two gland plates. The tray is made of steel. Installed and serviced from the inside or outside of the enclosure. This fan tray was developed for applications where low noise and chimney active cooling is required. Fan tray kits are supplied standard with: (i) all installation hardware; (ii) four muffin fans

and wire harness; (iii) one IEC-320-C14 connector. Standard finish is powder coated RAL7011 textured dark gray.

**CSA / UR;
NEMA/EEMAC 1 / IP20**

Note: 120V or 230V power cord not included



FAN TRAY CATALOG NUMBER	VOLTAGE (VAC)	WATTAGE PER FAN (W)	OPERATING FREQUENCY PER FAN (Hz)	AIR FLOW PER FAN (CFM)	NOISE LEVEL PER FAN (dB)
6500 MXFT115V	110	8.24	50	73.5	39.2
	120	7.89	60	51.4	30.5
6500 MXFT230V	220	8.00	50	73.5	39.2
	240	7.60	60	51.4	30.5

Data subject to change without notice.

