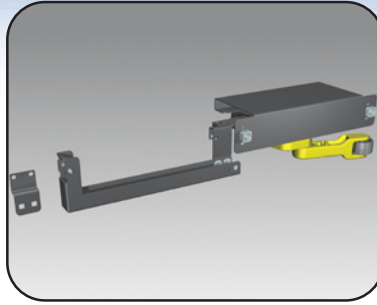


# NEMA 12-13 Mtrx MULTI-DOOR SOLUTIONS 6500 MXIMA

## Mechanical interlock, Actuator kits

The 6500 MXIMA mechanical interlock actuator kits are used in conjunction with interlock extensions and slave bridges in order to interlock up to 10 enclosures. Always installed on hinge side of the master doors.

**Note: Actuator is used for left or right side actuations. All mounting h/w supplied in kits.**

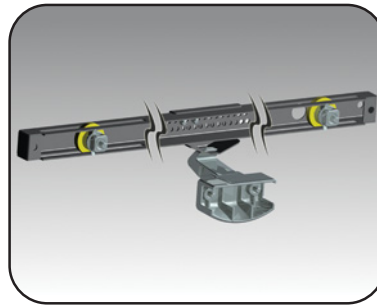


CATALOG NUMBER	DESCRIPTION
6500 MXIMA	Mechanical interlock, actuator kits

## Mechanical interlock, Extension kits

The 6500 MXIEX mechanical interlock extension kits are used to lock and unlock slave doors, via a cam and spring loaded hook. Extension kits are available for all cabinet widths.

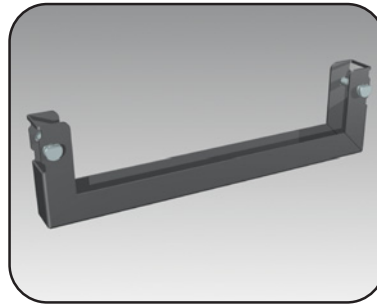
**Note: All mounting h/w supplied in kits.**



CATALOG NUMBER	FITS CABINET WIDTH (MM)
6500 MXIEX04	400
6500 MXIEX06	600
6500 MXIEX07	700
6500 MXIEX08	800
6500 MXIEX09	900
6500 MXIEX10	1000
6500 MXIEX12	1200
6500 MXIEX16	1600
6500 MXIEX18	1800

## Mechanical interlock, Slave kits

The 6500 MXISL mechanical interlock slave kits are used in line-ups with more than one slave door. The slave kit is a bridge that joins adjacent extension kits in order to transfer actuating translations from one cabinet to another.

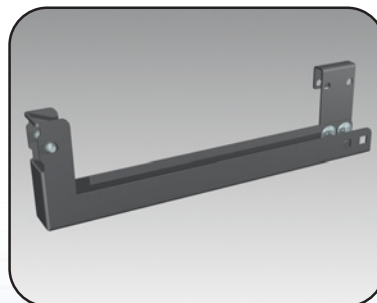


CATALOG NUMBER	DESCRIPTION
6500 MXISL	Mechanical interlock, slave kits

## Mechanical interlock, Adapter kits

The 6500 MXIAD mechanical interlock adapter kits are kits installed between an actuator kit and an extension kit where the line-up starts on opposite side of master door hinge side.

**Note: As per master kit, the adapter kit acts as the first slave bridge in a line-up. Supplied with all mounting h/w.**



CATALOG NUMBER	FITS CABINET WIDTH (MM)
6500 MXIAD04	400
6500 MXIAD06	600
6500 MXIAD07	700
6500 MXIAD08	800
6500 MXIAD09	900
6500 MXIAD10	1000
6500 MXIAD12	1200
6500 MXIAD16	1600
6500 MXIAD18	1800

Data subject to change without notice.