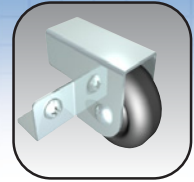


Mtrx LIFTING AND SUPPORTING KITS 6500 MXSK

6500 MXSK (pack of 12)
Fixed door support block – screws into door stiffener
Plastic and M5 self tapping mounting hardware



6500 MXRSK (pack of 1)
Roller door support – supports door while rolling onto cabinet frame
Rubber wheel, steel pins and mounting hardware



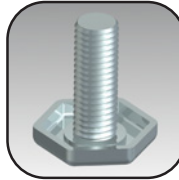
886 DS4 (pack of 1)
Door stop kit 90°, 110°, 135°
Zinc plated steel and mounting hardware



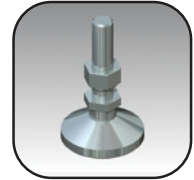
886 WSB (pack of 2)
Wall securing bracket kit – Fastens frame corners to wall – Wall mounting hole for max M10 or 3/8” fastener
Zinc plated steel and mounting h/w



6500 MXLEV (pack of 4)
Standard levelers – M12 stems screw directly into frame corners – Capacity (set) is 1000lbs
Steel, zinc plated



6500 MXLEV2 (pack of 4)
Heavy duty levelers – M12 stems screw directly into frame corners – Capacity (set) is 2200lbs
Steel, zinc plated



6500 MXLEV3 (pack of 4)
Anti slip levelers - M12 stems screw directly into frame corners – Capacity (set) is 1000lbs
Urethane pad, Zinc plated steel



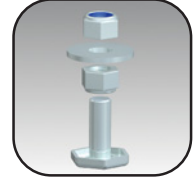
6500 MXLEV4 (pack of 4)
Anchoring levelers - M12 stems screw directly into frame corners – Capacity (set) is 1000lbs
Zinc plated steel



6500 MXLEV5 (pack of 4)
Vibration damper levelers - M12 stems screw directly into frame corners
Rubber pad, steel, zinc plated



6500 MXLEVPL (pack of 4)
Plinth leveling feet kit – For standard **Mtrx plinth kits 6500 MXPL & MXPLV (p.58)**
Zinc plated steel & hardware



886 CLEV (pack of 4)
Casters with leveling feet – M12 stems screw directly into frame corners – Capacity per set 1000lbs



886 CB200 (pack of 4)
Caster wheels with brake – M12 stems screw directly into frame corners - Capacity per set 1000lbs



886 EB12 (pack of 4)
Lifting eye bolt – M12 threads screw directly into frame corners – Capacity per set 3000lbs (each SWF - .34T) (see note below)
Steel, zinc plated



6500 MXLA (set of 2)
Lifting angles – Joins two adjacent cabinet lifting points in a line-up – Capacity (pair) 2000lbs (see note below)
Steel, zinc plated and mounting h/w



6500 MXLB lifting bar see page 142

Note on Lifting and Supporting accessories

When lifting with Eye Bolts:

- (i) Make sure sling angles with top cover are no less than 45° - ideally should be 60° or more
 - (ii) If lifting at an angle always ensure eye bolts are oriented along the axis of the sling
- When lifting with Lifting Angles or Bar:

- (i) Vertical lifting at 90° with respect to top cover is recommended
 - (ii) Make sure shackles and spreader bar which comply with government regulations are used
- Specified capacities are approximations and may vary due to spe-

cific applications. The acceptability of these systems for the eventual application is the sole responsibility of the customer. For large line-ups shipped assembled the use of our **transportation base / plinth (6500 MXBT p.61) is recommended.**

Data subject to change without notice.