

## Vertical mount air conditioner - 2500 to 5000 BTU

The **IQ2500V** vertical mount air conditioners are used to reduce heat accumulation within enclosures and maintain a safe operating temperature.

These units use closed-loop cooling technology, which removes heat without letting outside air into the sealed enclosure. All units feature a digital programmable temperature controller with an

alarm. The air conditioners feature a rugged 16 GA welded steel, dent resistant cabinet construction. The units have a space saving aesthetic cabinet design. A built-in condensate evaporation package is included. The units are powered by an efficient, quiet and long lasting rotary compressor, with a CFC-free refrigeration system. All units are factory test-

ed and are designed to mount on the side of an enclosure, while maintaining NEMA 12 integrity. Units are ANSI/ASA 61 gray or brushed stainless steel.

**UL / ULc Listed,  
NEMA/EEMAC 12 / IP54  
Steel units: NEMA 4 w/N4GK kit  
SS units: NEMA 4X w/N4GK kit**

### FEATURES

- Digital temperature controller with alarm
- Durable 16 gauge welded steel construction
- Also available in stainless steel
- Built in condensate evaporation package
- Easy pull-out .1ter
- Efficient, quiet and long lasting rotary compressor
- CFC-free refrigeration System
- Space saving aesthetic cabinet design
- 100% factory tested
- Designed to mount on side of enclosure while maintaining NEMA type 12, 4 or 4X integrity

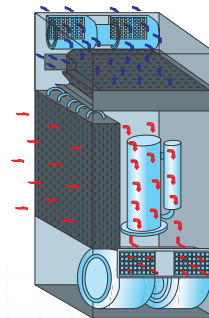


IQ 2500V  
IQ 3500V  
IQ 4000V  
IQ 5000V



IQ 2500V SS  
IQ 3500V SS  
IQ 4000V SS  
IQ 5000V SS

### AIR FLOW DIAGRAM



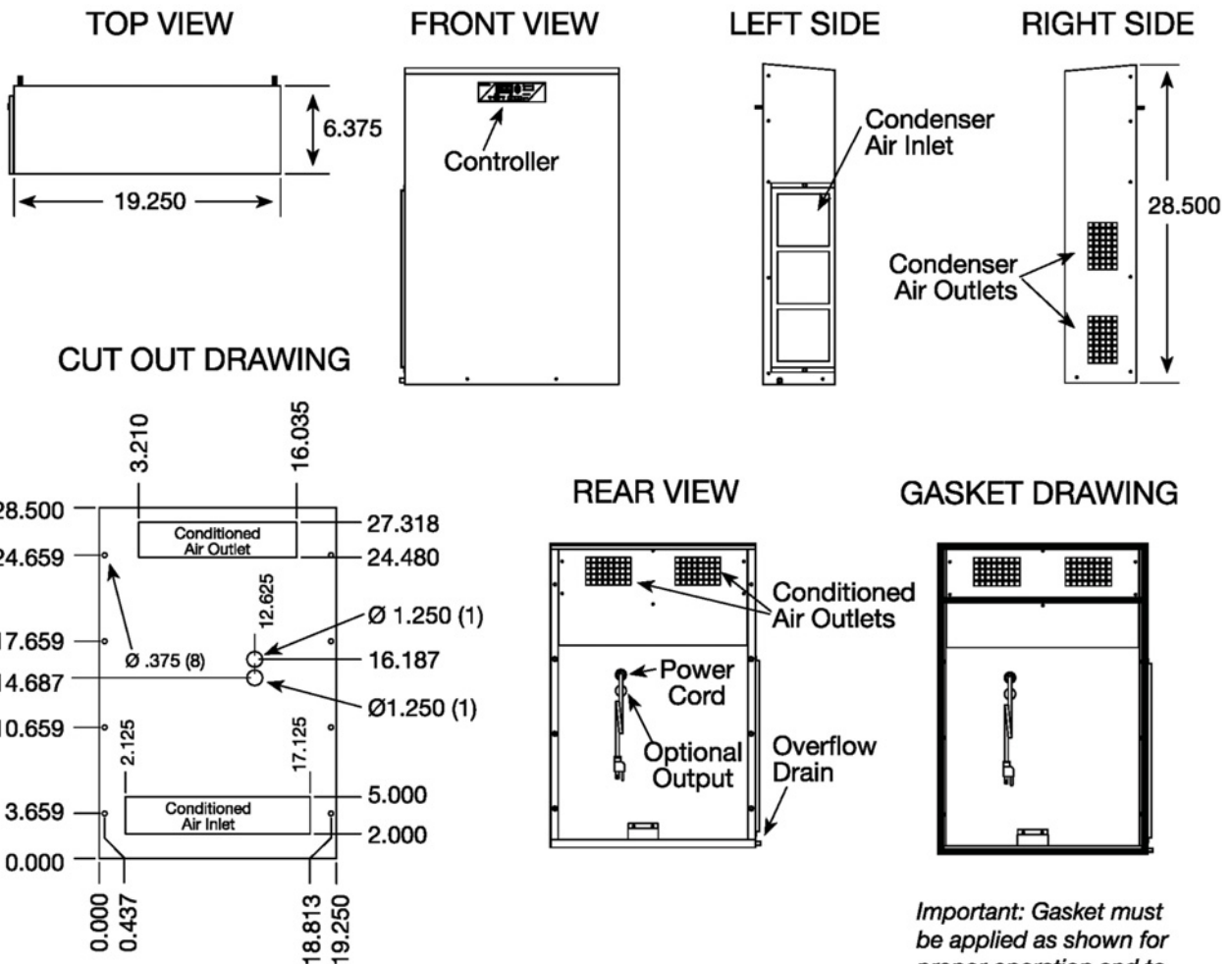
← Conditioned Enclosure Air Flow  
← Ambient Air Flow

Data subject to change without notice.

Washdown Hoods	N4GK NEMA 4/4X Gasket Kit	Ambient Corrosive Package	External Alarms Audible & Visual	Heating & Low Ambient Packages	Remote IQ-X Controller	ICENET Remote Control Package
p.492	p.594	p.594	p.594	p.594	p.594	p.594

## Vertical mount air conditioner - 2500 to 5000 BTU

CATALOG NUMBER		BTU /HR	VOLTS /HZ	MAX. AMPS	MAX. TEMP	DIMENSIONS			SHIP WGT LBS.
MILD STEEL	STAINLESS STEEL					H	W	D	
IQ2500V-126	IQ2500V-126-SS	2500	120/60	7.9	125°F	28.50	19.25	6.38	71
IQ2500V-236	IQ2500V-236-SS	2500	230/60	3.9	125°F	28.50	19.25	6.38	71
IQ2500V-236	IQ2500V-236-SS	2500	220/50	4.2	125°F	28.50	19.25	6.38	71
IQ3500V-126	IQ3500V-126-SS	3500	120/60	8.2	125°F	28.50	19.25	6.38	71
IQ3500V-236	IQ3500V-236-SS	3500	230/60	3.8	125°F	28.50	19.25	6.38	71
IQ3500V-236	IQ3500V-236-SS	3500	220/50	4.0	125°F	28.50	19.25	6.38	71
IQ4000V-126	IQ4000V-126-SS	4000	120/60	8.2	125°F	28.50	19.25	6.38	71
IQ4000V-236	IQ4000V-236-SS	4000	230/60	4.0	125°F	28.50	19.25	6.38	71
IQ4000V-236	IQ4000V-236-SS	4000	220/50	4.2	125°F	28.50	19.25	6.38	71
IQ5000V-126	IQ5000V-126-SS	5000	120/60	8.7	125°F	28.50	19.25	6.38	71
IQ5000V-236	IQ5000V-236-SS	5000	230/60	4.3	125°F	28.50	19.25	6.38	71
IQ5000V-236	IQ5000V-236-SS	5000	220/50	4.8	125°F	28.50	19.25	6.38	71



**Important: Gasket must be applied as shown for proper operation and to maintain NEMA integrity.**

Data subject to change without notice.

Drawings are for illustration purposes only. Data is subject to change.