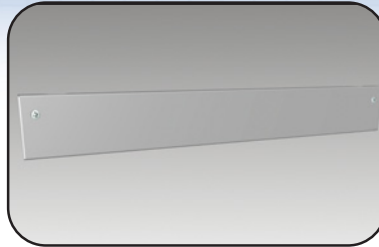


Trim panel

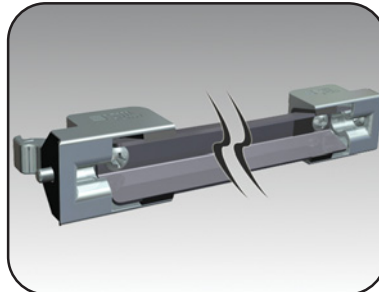
The 6500 MXPT trim panel kit is required to complete partial panel and partial door configurations. Each kit consists of two trim panels and the necessary mounting hardware. NEMA 12 protection rating is retained when used in conjunction with horizontal mullions. 16ga sheetmetal. Finish is textured light gray RAL7035.



CATALOG NUMBER	FOR FRAME WIDTH OR DEPTH (mm)
6500 MXPT04	400
6500 MXPT06	600
6500 MXPT07	700
6500 MXPT08	800
6500 MXPT09	900
6500 MXPT10	1000

Horizontal mullion

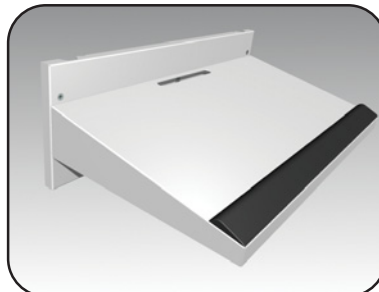
The 6500 MXPM horizontal mullion kit is used to seal trim panels, partial covers or partial doors and retain the protection rating of the enclosure. The zinc castings also act as the latch for the partial door ¼ turn locks. Finish is textured dark gray RAL7011.



CATALOG NUMBER	FOR FRAME WIDTH OR DEPTH (mm)
6500 MXPM04	400
6500 MXPM06	600
6500 MXPM07	700
6500 MXPM08	800
6500 MXPM09	900
6500 MXPM10	1000

Fixed writing / keyboard console

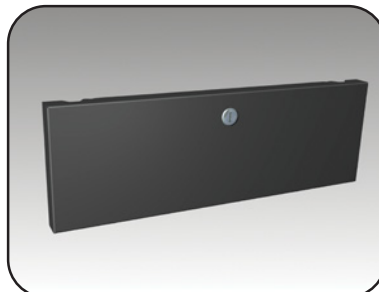
The 6500 MXPW fixed writing / keyboard console kit fits within a 200mm high module. Its 320mm angled surface with trim is ideal for writing, documentation, or a keyboard. A cutout and sealing cap is provided for cable access. Finish is textured light gray RAL7035.



CATALOG NUMBER	FOR FRAME WIDTH OR DEPTH (mm)
6500 MXPW04	400
6500 MXPW06	600
6500 MXPW07	700
6500 MXPW08	800
6500 MXPW09	900
6500 MXPW10	1000

Horizontal hinged cover

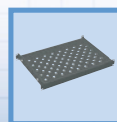
The 6500 MXPK Horizontal hinged cover fits within a 200mm high module. Its horizontally hinged cover enables a tray to slide out. Supplied standard with slotted or keyed ¼ turn locks. Finish is textured dark gray RAL7011.



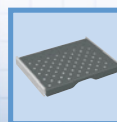
CATALOG NUMBER	FOR FRAME WIDTH OR DEPTH (mm)
6500 MXPK0206	600
6500 MXPK0207	700
6500 MXPK0208	800
6500 MXPK0209	900
6500 MXPK0210	1000

Note: The horizontal hinged door can be combined with a frame mounted or rack mounted pull shelves and drawers. Refer to pages 111 and 112.

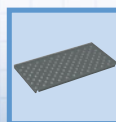
Data subject to change without notice.



p.133



p.111



p.110



p.127