

# NEMA 12-13 Mtrx MULTI-DOOR SOLUTIONS 6500 MXCC

## Corner cabinet side spacer kit

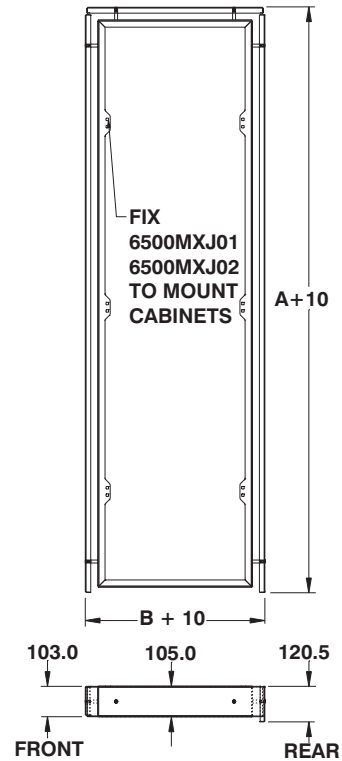
The 6500 MXCC corner cabinet side spacer kits are used to enable a 90° bend in a line-up. The spacers are to be assembled on one or on both open sides of the corner cabinet. To order a complete corner cabinet you must first select the following

standard components:

- 6500 MX frame (1x) (p.18)
- 6500 MXT top cover (1x) (p.50)
- 6500 MXB bottom cover (1x) (p.56)
- 6500 MXC side cover (2x) (p.36)
- Optional: 6500 MXPL plinth (p.58)
- Optional: 6500 MXSCE solid

cable entry top or bottom (p.63)

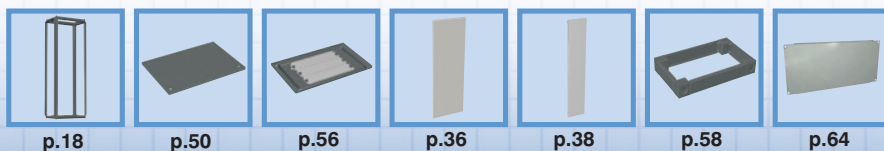
**Note: Spacers are sold separately. All mounting h/w and assembly instructions are supplied in kits.**



CATALOG NUMBER	NOMINAL		DIMENSIONS	
	H	D	A	B
6500 MXCC0706	700	600	660	560
6500 MXCC0708	700	800	660	760
6500 MXCC0709	700	900	660	860
6500 MXCC0710	700	1000	660	960
6500 MXCC0712	700	1200	660	1160
6500 MXCC1404	1400	400	1360	360
6500 MXCC1405	1400	500	1360	460
6500 MXCC1406	1400	600	1360	560
6500 MXCC1408	1400	800	1360	760
6500 MXCC1409	1400	900	1360	860
6500 MXCC1410	1400	1000	1360	960
6500 MXCC1412	1400	1200	1360	1160
6500 MXCC1604	1600	400	1560	360
6500 MXCC1605	1600	500	1560	460
6500 MXCC1606	1600	600	1560	560
6500 MXCC1608	1600	800	1560	760
6500 MXCC1609	1600	900	1560	860
6500 MXCC1610	1600	1000	1560	960
6500 MXCC1612	1600	1200	1560	1160
6500 MXCC1804	1800	400	1760	360

CATALOG NUMBER	NOMINAL		DIMENSIONS	
	H	D	A	B
6500 MXCC1805	1800	500	1760	460
6500 MXCC1806	1800	600	1760	560
6500 MXCC1808	1800	800	1760	760
6500 MXCC1809	1800	900	1760	860
6500 MXCC1810	1800	1000	1760	960
6500 MXCC1812	1800	1200	1760	1160
6500 MXCC2004	2000	400	1960	360
6500 MXCC2005	2000	500	1960	460
6500 MXCC2006	2000	600	1960	560
6500 MXCC2008	2000	800	1960	760
6500 MXCC2009	2000	900	1960	860
6500 MXCC2010	2000	1000	1960	960
6500 MXCC2012	2000	1200	1960	1160
6500 MXCC2205	2200	500	2160	460
6500 MXCC2206	2200	600	2160	560
6500 MXCC2208	2200	800	2160	760
6500 MXCC2209	2200	900	2160	860
6500 MXCC2210	2200	1000	2160	960
6500 MXCC2212	2200	1200	2160	1160

Data subject to change without notice.

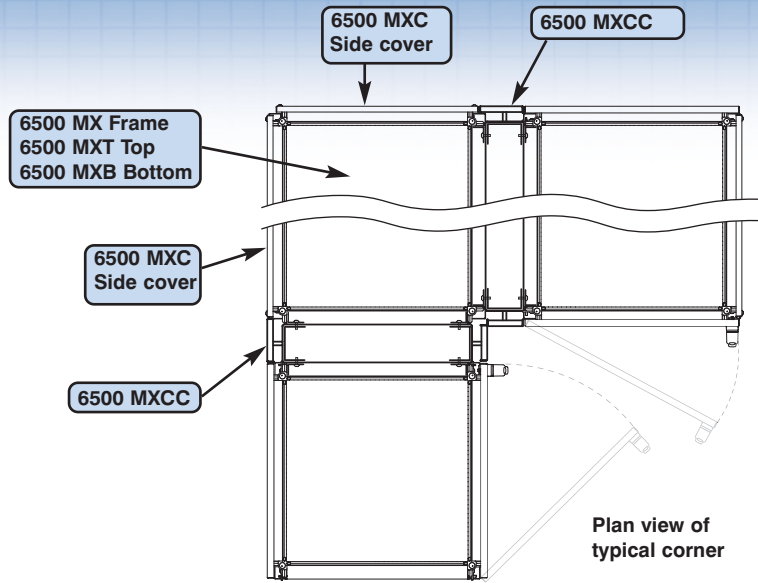


# NEMA 12-13 Mtrx MULTI-DOOR SOLUTIONS 6500MXPLC

**NOTE:**

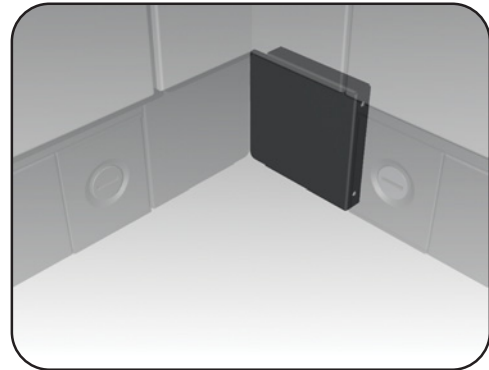
(i) Corner cabinets are ordered separately and are based on the standard 6500 MX frame and covers. Depending on fixed cover or door configurations (hinge right vs. hinge left) one 6500 MXCC spacer kit may be sufficient to meet the requirements. (Refer to adjacent image)

(ii) Two depths possible for line-ups. Can require two different adaptors.



## Plinth spacer, corner cabinet

The 6500 MXPLC corner cabinet plinth spacer kits are cosmetic accessories used to ensure the esthetically pleasing looks are retained at a 90° bend within a line-up. The spacers are standard 100mm or 200mm high. Supplied in pairs with all installation hardware. To be used with 6500 MXPL plinths (refer to p.58)

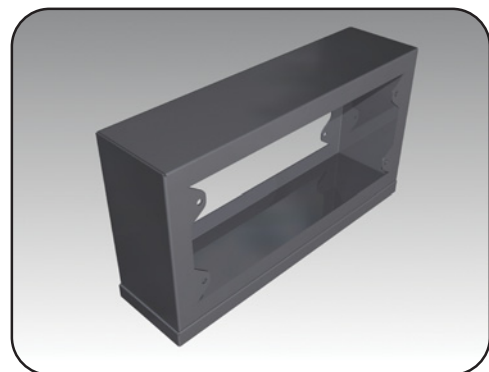


CATALOG NUMBER	FOR PLINTH HEIGHT (MM)
6500 MXPLC01	100
6500 MXPLC02	200

## Solid top or bottom spacer, corner cabinet

The 6500 MXSCECC corner cabinet solid top or bottom spacer kits are cosmetic accessories used to ensure the esthetically pleasing looks are retained at a 90° bend within a line-up. The spacers are standard 100mm, 200mm, 300mm, or 400mm high.

**Note:** Due to varying depths, spacers are sold individually. All mounting h/w supplied in kits.



CATALOG NUMBER	FITS ON TROUGH HEIGHT	FITS ON TROUGH DEPTH
6500 MXSCECC--04	Replace the '—' by	400
6500 MXSCECC--05	the correct height	500
6500 MXSCECC--06	'01' = 100	600
6500 MXSCECC--08	'02' = 200	800
6500 MXSCECC--09	'03' = 300	900
6500 MXSCECC--10	'04' = 400	1000

Data subject to change without notice.