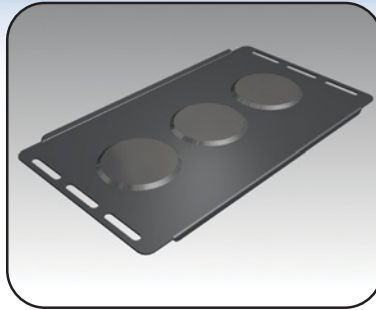


Cable entry gland plate

The **886 GPCE cable entry gland plate** is installed mainly on the bottom cover of a standard Mtrx cabinet. The steel plate is supplied in individual packs with three 3 inch plastic blanking caps. Supplied with gland plate depth of 200mm only (short side). Standard finish RAL7011 textured dark gray.



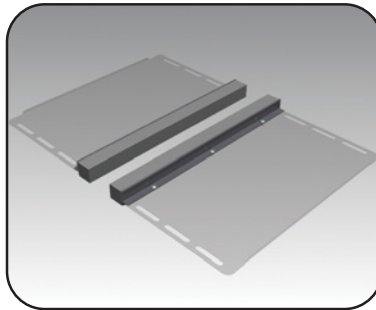
CATALOG NUMBER	FITS IN CABINET WIDTH	FIT ON TROUGH DEPTH
886 GPCE0602	600 & 1200	400 TO 1200
886 GPCE0702	700	400 TO 1200
886 GPCE0802	800 & 1600	400 TO 1200
886 GPCE0902	900	400 TO 1200
886 GPCE1002	1000	400 TO 1200

NOTE: Only the 886 GPCE0602 can be installed on cable entry top covers 6500 MXTC (p.51) and on Streamline cabinets (p.78).

MX/SL
COMPATIBLE

Cable entry protective foam for gland plate

The **886 GPG kit** is comprised of a Polyurethane foam gasket used to offer additional protection where cables enter the enclosure via the supplied gland plates. Kit consists of all hardware required for sealing one gland plate seam.



CATALOG NUMBER	FITS ON GLAND PLATES FOR WIDTH (MM)
886 GPG04	400
886 GPG06	600 & 1200
886 GPG07	700
886 GPG08	800 & 1600
886 GPG09	900
886 GPG10	1000

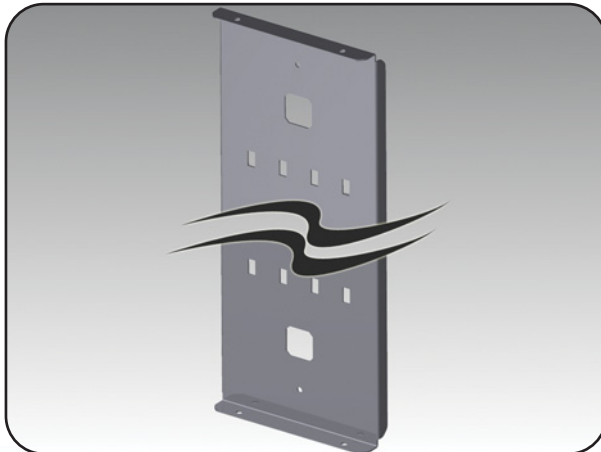
NOTE: Gland plate not provided, kit is intended for retrofitting onto gland plates supplied with cabinet bottom cover

Cable guide

The **886 CT kit** is comprised of a pair of 16ga sheetmetal guides. Guides are installed directly onto the cabinet frame in any direction (height, width or depth). The

cable guides are supplied with features enabling the use of tie wraps throughout the entire length of the parts.

Finish is textured dark gray RAL7011. Supplied with all necessary mounting hardware.



CATALOG NUMBER	LENGTH (MM)	FITS IN NOMINAL CABINET /FRAME DIMENSION (MM)
886 CT04	295	400
886 CT05	395	500
886 CT06	495	600
886 CT07	595	700
886 CT08	695	800
886 CT09	795	900
886 CT10	895	1000
886 CT12	1095	1200
886 CT14	1295	1400
886 CT16	1495	1600
886 CT18	1695	1800
886 CT20	1895	2000
886 CT22	2095	2200

Data subject to change without notice.