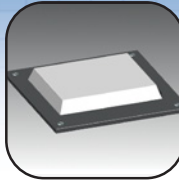


Mtrx ENVIRONMENTAL CONTROL

Mtrx pagoda tops and pagoda fans

Refer to p. 53



Mtrx top mounted air conditioning units and tops

Refer to p. 590



Door or side vertically mounted air conditioning units

Refer to p. 572



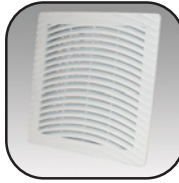
Vertically mounted and top mounted heat exchangers

Refer to p. 554



Filter and grills

Refer to p. 493



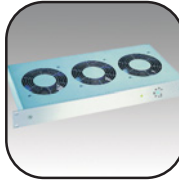
Fan, filter and grills

Refer to p. 494



19" rack mounted fan trays

Refer to p. 507



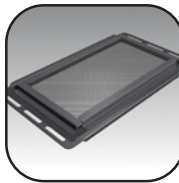
Top mounted fan tray (Nema 1)

Refer to p. 52



Vented and filter gland plates

Refer to p. 57



Mtrx vented tops

Refer to p. 55



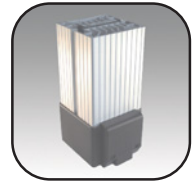
Thermostats

Refer to p. 527



Heaters

Refer to p. 541



Humidistats

Refer to p. 523



Electronic Relay

Refer to p. 531

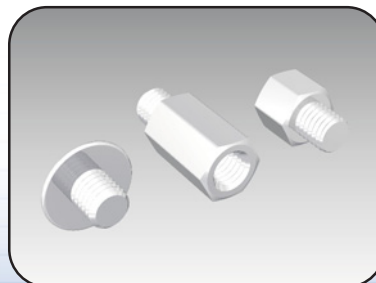


NOTE: All installation cutouts can be provided by EXM as part of our customization and value added services (refer to p.68)

Mtrx cabinet top spacer

The 6500 MXTSP top spacers are installed between the cabinet frame and the cabinet top to provide a gap for ventilation or other purposes.

The kit consists of four cabinet spacers, to be installed in each corner.



CATALOG NUMBER	SPACER HEIGHT	PACKS OF
6500 MXTSP10	10mm	4
6500 MXTSP20	20mm	4

Data subject to change without notice.

