

OPTIONS & ACCESSORIES

Corrosive Package

Recommended for coastal areas or anywhere corrosives to copper or aluminum may be present in the atmosphere.

- *Ambient Corrosive Package – CP*
- *Total Corrosive Package – CP2*

Alarm Output Signal

Wire output lead provides a dry contact signal when an alarm condition occurs. Contact may be NO, NC or both NO and NC.

- *Dry Contact-Normaly Open – X01*
- *Dry Contact-Normaly Closed – X02*
- *Dry Contact-Normaly Open/Closed – X03*

NEMA 4 Gasket Kit

Maintains NEMA 4 or 4X seal at enclosure/air conditioner interface.

- *NEMA 4 Gasket Kit – N4GK*

Low Ambient Options

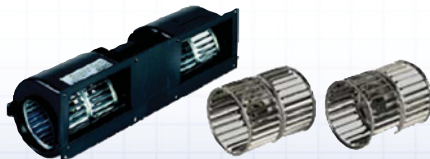
Recommended for models used in atmosphere where ambient temperature may fall significantly below the enclosure temperature.

- *Crankcase Heater – CH*
- *Low Ambient Package – CH & By-pass Valve – LA*
- *High pressure Fan Cycling Switch on select Models*

Metal Blower Wheels

Recommended for harsh environments.

- *BH 1300 Blower – MW1300-set*
- *BH 1400 Blower – MW1400-set*
- *BH 7800 Blower – MW7800-CW*



External Heat Output

Electrical output used when a heater is required to maintain satisfactory temperature and humidity conditions. Output is driven by Ice Qube's Controller.

Fan Heater
Available 100 to 400 watts



PTC Fan Heater
Available 400 to 650 watts



Remote Controller Kit

May be located inside enclosure for additional security or located on accessible enclosure surface for more convenient display and control.

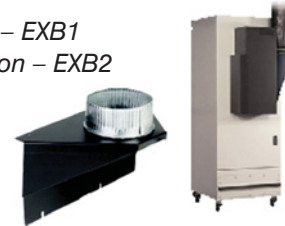
- *Controller Kit XC*



Exhaust Diverter Boot

Recommended for environments where the warm air exhausted from air conditioner is undesired.

- *Vertical Application – EXB1*
- *90 degree application – EXB2*



Condensate Management Equipment

Recommended for extremely humid environments where condensate dripping onto the floor is prohibited or undesired.

- *600 Watt Evaporator 120V – CEV3*
- *600 Watt Evaporator 230V – CEV4*



Data subject to change without notice.