

WHY CHOOSE EXM?

EXM Manufacturing Ltd. has been producing electrical and electronic enclosures since 1975.

Our commitment to complete customer satisfaction is reflected in the superior quality of our products. EXM manufactures a

full line of NEMA rated enclosures and cabinets for industrial and commercial applications.

EXM also produces consoles, PC cabinets, electrical distribution equipment, modular cabinets and accessories.

Our products are engineered with

distinct product advantages, some of which are unparalleled in the industry.

The following reasons why you should choose our products demonstrate how **EXM is redefining enclosures.**

1. BoxCAD product configurator

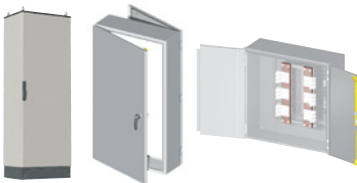


Our automated manufacturing process allows us to produce custom enclosures quickly and effectively. Components from the Mtrx modular cabinet system can also be customized. EXM can produce enclosures with special sizes or colors. We can pierce holes or install studs and stand-offs and a variety of other acces-

sories such as windows, filter fans and more. The objective is to reduce time delivery and to eliminate back and forth communication. Everything can be easily done on-line without the need of a CAD expert, just visit :

www.boxcadexm.com
to customize your enclosure.

2. More modular, industrial and commercial products



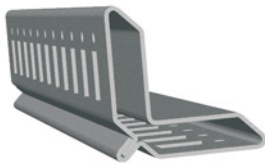
EXM manufactures complete lines of modular, industrial and commercial enclosures.

EXM offers more standard sizes to meet your specific requirements.

Industrial enclosures are available in beige (metric dimensions) and gray (standard dimensions).

EXM is a single source for all your enclosure requirements.

3. Galvanized Mtrx modular cabinet frame



Mtrx modular cabinet frames are roller-formed and are made of powder-coated electro-galvanized steel. This unique advantage offers exceptional corrosion resistance.

The symmetric frame is reinforced by an exclusive stiffening rib, present all along the inner edges of the cabinet.

The result is a rigid, practical and aesthetic frame.

4. Poured-in-place gaskets



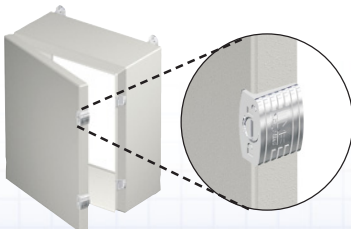
Many EXM products, including the new Mtrx modular cabinets, feature a high-quality seamless poured-in place gasket.

Contrary to neoprene gaskets used on most competing boxes, these gaskets preserve their integrity and do not suffer from compression.

This process extends the life of the enclosure and further assures the effectiveness of the seal.

Poured gaskets allow the effective use of quarter-turn locking technology. Indeed, the use of quarter turn locks with neoprene gaskets is inadequate because of compression problems.

5. Flange-mounted 1/4 turn locks



EXM ESCH enclosures feature easy-access 1/4 turn flange-mounted locking mechanisms which are located outside the gasket-protected area.

This eliminates water seepage problems through the lock and **provides a full workable space on the door.**

Standard JIC enclosures require the lengthy manual tightening of series of clamps to close the cover. In contrast, EXM ESCH enclosures are closed within seconds simply by operating a minimum number of 1/4 turn locks.

Key locks, padlock provisions and inserts are available.

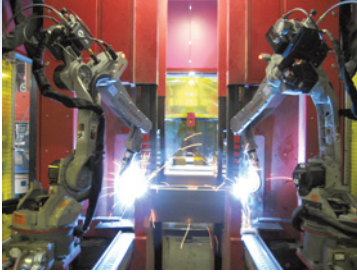
Data subject to change without notice.

xiv



WHY CHOOSE EXM?

6. Automated seamless welding



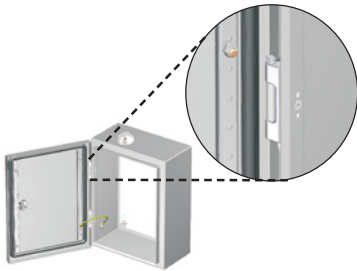
EXM benefits from an automated manufacturing process which allows seamless welding of nearly all enclosures, including some NEMA 1 & 3 products!

This makes the construction of our 5100 ES (NEMA 1) and our 5300 ES (NEMA 3) enclosures similar to that of a NEMA 4 box.

Seamless welding provides **above-par durability, rigidity & security**; all at a very competitive price.

Why settle for spot welding when you can benefit from all the advantages of continuously welded EXM enclosures?

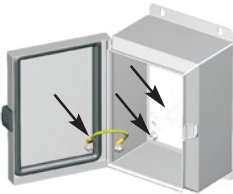
7. Heavy duty die cast hinges



EXM industrial enclosures (ES family) feature heavy-duty die cast hinges. These hinges are not spot welded, they are bolted on. This minimizes the risk of rust formation and facilitates their removal. They are also concealed to improve the appearance of the enclosures. On enclosures higher than 30" (760mm) the captive hinge pin which binds the hinge to the door can be pulled to

remove the door. On the other enclosures, most users install their equipment on a table top. A similar hinge is used, made in one piece that permits opening the door until it touches the table top. This facilitates mounting of instruments on the door as it lays against a solid surface. These doors can be removed by unfastening the anti-vibration lock screws.

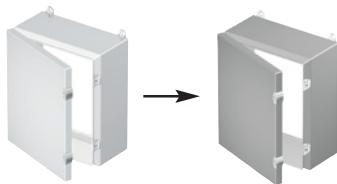
8. Inner panel and anti-vibration hardware included



Most EXM wall mounted enclosures (ES and ESCH series) **come complete with an inner panel and a ground strap**. This eliminates the need to purchase the panel separately.

Furthermore, most EXM products are shipped with quality anti-vibration hardware. This hardware is ideal for mobile OEM applications and comes at no extra cost to the customer.

9. Save on powder coated stainless steel



EXM offers a full line of powder coated stainless steel products. Before contaminants are exposed to the stainless steel, they are thwarted by a durable layer of powder coating, which maximizes the life of the stainless steel

component.

Best of all, painted stainless steel costs less than brushed stainless steel!* That's more protection for less money!

10. Manufactured in North America 3 distribution centers



Most EXM products are produced in our fully automated North American manufacturing facilities.

This automation is the result of 35 years of in-house research and development.

These factors reduce lead time and allow us to remain flexible and competitive.

To optimize our level of service in the United States, a new distribution center was opened in Westborough, MA.

* Some conditions apply.

Data subject to change without notice.