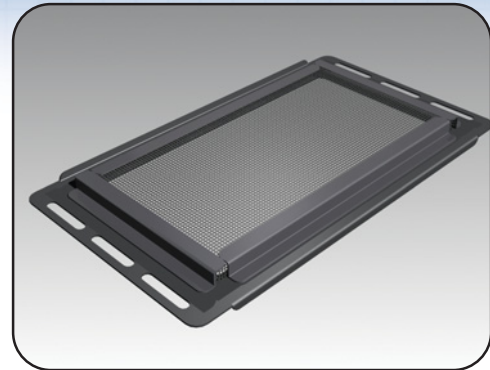


Gland plates

Filter gland plate

The 886 GPF filter gland plate is installed mainly on the bottom cover of a standard Mtrx cabinet.. The steel part and filter is supplied in individual packs. Standard finish RAL7011 textured dark gray.

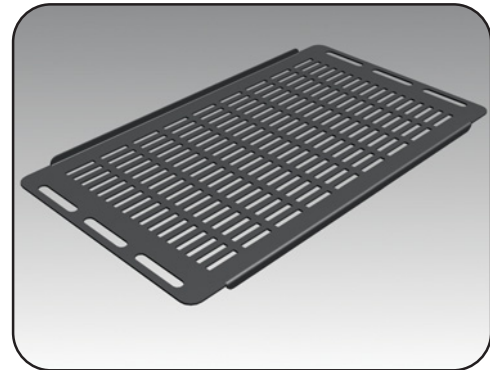
NOTE: Only the 886 GPF0602 and 0604 can be installed on cable entry top covers 6500 MXTC (p.51) and on Streamline cabinets (p.78).



Ventilated gland plate

The 886 GPV ventilated gland plate is installed mainly on the bottom cover of a standard Mtrx cabinet. The steel plate is supplied in individual packs. Standard finish RAL7011 textured dark gray.

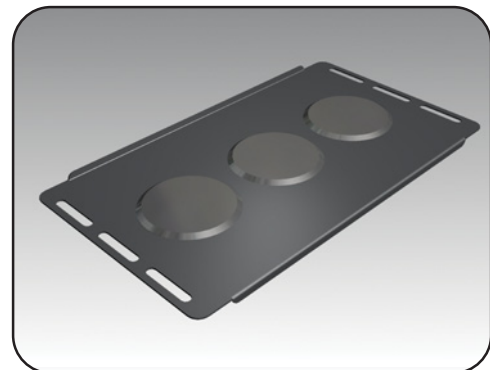
Note: Only the 886 GPV0602 and 0604 can be installed on cable entry top covers 6500 MXTC (p.51) and on Streamline cabinets (p.78).



Cable entry gland plate

The 886 GPCE cable entry gland plate is installed mainly on the bottom cover of a standard Mtrx cabinet.. The steel plate is supplied in individual packs with three 3 inch plastic blanking caps. Standard finish RAL7011 textured dark gray. For cable entry grommets - Refer to cable management section, grommets and seals p.119)

Note: Only the 886 GPCE0602 can be installed on cable entry top covers 6500 MXTC (p.51) and on Streamline cabinets (p.78).



MX/SL
COMPATIBLE

CATALOG NUMBER	CATALOG NUMBER	CATALOG NUMBER	FIT IN CABINET WIDTH	GLAND PLATE (SHORT SIDE)	FIT IN CABINET DEPTH
886 GPF0602	886 GPV0602	886 GPCE0602	600 & 1200	200	400 TO 1200
886 GPF0604	886 GPV0604	-	600 & 1200	400	600 TO 1200
886 GPF0702	886 GPV0702	886 GPCE0702	700	200	400 TO 1200
886 GPF0704	886 GPV0704	-	700	400	600 TO 1200
886 GPF0802	886 GPV0802	886 GPCE0802	800 & 1600	200	400 TO 1200
886 GPF0804	886 GPV0804	-	800 & 1600	400	600 TO 1200
886 GPF0902	886 GPV0902	886 GPCE0902	900	200	400 TO 1200
886 GPF0904	886 GPV0904	-	900	400	600 TO 1200
886 GPF1002	886 GPV1002	886 GPCE1002	1000	200	400 TO 1200
886 GPF1004	886 GPV1004	-	1000	400	600 TO 1200

Data subject to change without notice.



p.51

p.56

p.52

p.119

p.120

<http://www.exmweb.com>

☎ 1-800-363-2423

Fax : 450-979-4626

info@exmweb.com

