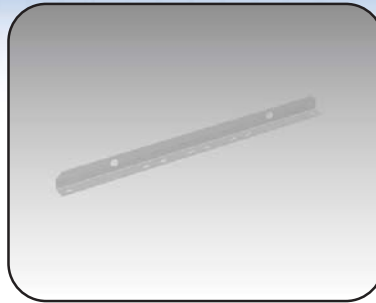


Lifting bars

The **6500 MXLB** lifting bars are used to optimize weight distribution while lifting three to six ganged cabinets, with a maximum of 500lbs per bay. The bars mount on top of the cabinets. The kit includes two plated steel lifting bars and installation hardware.



CATALOG NUMBER	TOTAL WIDTH	PACKS OF
6500 MXLB12	1200	2
6500 MXLB13	1300	2
6500 MXLB14	1400	2
6500 MXLB15	1500	2
6500 MXLB16	1600	2
6500 MXLB17	1700	2
6500 MXLB18	1800	2
6500 MXLB19	1900	2
6500 MXLB20	2000	2
6500 MXLB21	2100	2
6500 MXLB22	2200	2
6500 MXLB23	2300	2
6500 MXLB24	2400	2
6500 MXLB25	2500	2
6500 MXLB26	2600	2
6500 MXLB27	2700	2
6500 MXLB28	2800	2
6500 MXLB29	2900	2
6500 MXLB30	3000	2

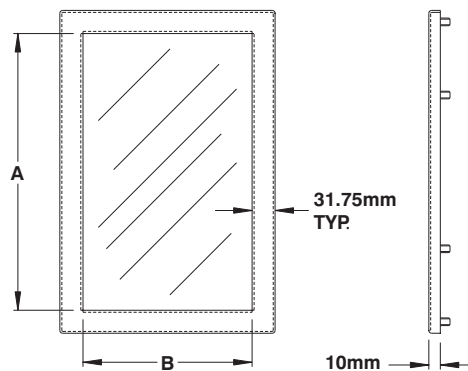
MX/SL
COMPATIBLE

Steel frame window kit

The **886 WK** steel frame window kits are made from 16 or 14 GA steel with studs welded to permit easy installation by piercing a cut out on the cabinet. The window is self-extinguishing polycarbonate. All mounting hardware is supplied.

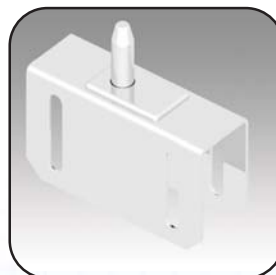
Frames are finished with heat fused polyester powder, electrostatically applied on a pre-treated base. Finish is RAL 7035 textured light gray. **NEMA/EEMAC 12**

CATALOG NUMBER	DIMENSIONS		PACKS OF
	A	B	
886 WK1308	127	76	1
886 WK2314	229	140	2
886 WK3308	330	76	3
886 WK3313	330	127	4
886 WK4314	432	140	6
886 WK4328	432	279	7
886 WK5838	584	381	9
886 WK7448	737	483	12
886 WK8958	889	584	14



Remote door switch - Series FLRDS

The **886 FLRDS** remote door switch is a cost effective solution to power on/off the light within an enclosure. The bracket is designed to operate on all Mtrx doors and side doors, with or without stiffeners. Consists of switch, steel bracket and hardware.



CATALOG NUMBER	SHIP WGHT LBS.
886 FLRDS	1

Data subject to change without notice.