

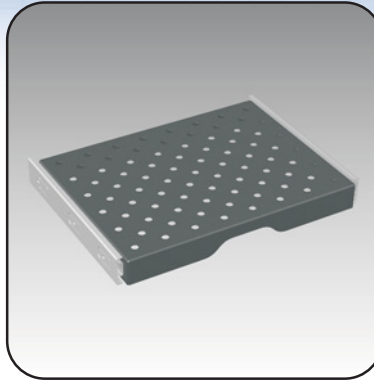
NEMA 12-13 Mtrx SHELVING & STORAGE 6500 MXSP

Pull-out shelf

The **6500 MXSP pull-out shelves** are used to support computers or other light equipment. The shelves are vented to allow air circulation.

They are installed directly on the frame, using the included installation brackets. Several shelves can be installed in a cabinet. Shelves are available for all single bay cabinet configurations.

Transformers or other heavy equipment should be mounted to the bottom of the cabinet using the Transformer Support Bracket kit (6500 MXTSB), see page 118.



CATALOG NUMBER	NOMINAL	
	W	D
6500 MXSP0404	400	400
6500 MXSP0405	400	500
6500 MXSP0406	400	600
6500 MXSP0408	400	800
6500 MXSP0604	600	400
6500 MXSP0605	600	500
6500 MXSP0606	600	600
6500 MXSP0608	600	800
6500 MXSP0609	600	900
6500 MXSP0610	600	1000
6500 MXSP0706	700	600
6500 MXSP0708	700	800
6500 MXSP0709	700	900
6500 MXSP0710	700	1000
6500 MXSP0804	800	400
6500 MXSP0805	800	500
6500 MXSP0806	800	600
6500 MXSP0808	800	800
6500 MXSP0809	800	900
6500 MXSP0810	800	1000
6500 MXSP0904	900	400
6500 MXSP0905	900	500
6500 MXSP0906	900	600
6500 MXSP0908	900	800
6500 MXSP0909	900	900
6500 MXSP0910	900	1000
6500 MXSP1004	1000	400
6500 MXSP1005	1000	500
6500 MXSP1006	1000	600
6500 MXSP1008	1000	800
6500 MXSP1009	1000	900

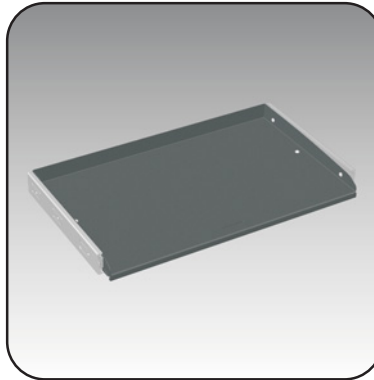
MX/SL
COMPATIBLE

Pull-out shelf with sliding mouse pad

The **6500 MXSPM pull-out shelves with mouse pad** are used to support computers or other light equipment. The shelves are vented to allow air circulation.

They are installed directly on the frame, using the included installation brackets. Several shelves can be installed in a cabinet. Shelves are available for all single bay cabinet configurations.

Transformers or other heavy equipment should be mounted to the bottom of the cabinet using the Transformer Support Bracket kit (6500 MXTSB), see page 118.



CATALOG NUMBER	NOMINAL	
	W	D
6500 MXSPM0404	400	400
6500 MXSPM0405	400	500
6500 MXSPM0406	400	600
6500 MXSPM0408	400	800
6500 MXSPM0604	600	400
6500 MXSPM0605	600	500
6500 MXSPM0606	600	600
6500 MXSPM0608	600	800
6500 MXSPM0609	600	900
6500 MXSPM0610	600	1000
6500 MXSPM0706	700	600
6500 MXSPM0708	700	800
6500 MXSPM0709	700	900
6500 MXSPM0710	700	1000
6500 MXSPM0804	800	400
6500 MXSPM0805	800	500
6500 MXSPM0806	800	600
6500 MXSPM0808	800	800
6500 MXSPM0809	800	900
6500 MXSPM0810	800	1000
6500 MXSPM0904	900	400
6500 MXSPM0905	900	500
6500 MXSPM0906	900	600
6500 MXSPM0908	900	800
6500 MXSPM0909	900	900
6500 MXSPM0910	900	1000
6500 MXSPM1004	1000	400
6500 MXSPM1005	1000	500
6500 MXSPM1006	1000	600
6500 MXSPM1008	1000	800
6500 MXSPM1009	1000	900

19"?

The shelving solutions above are installed directly on the cabinet frame. Shelves are also available for installation on 19" rack angles. See page 133 for details.

Data subject to change without notice.