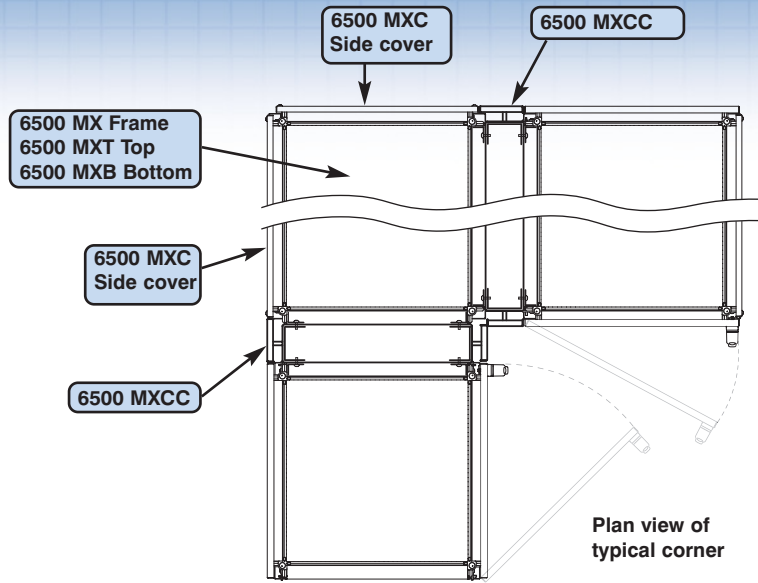


NEMA 12-13 Mtrx MULTI-DOOR SOLUTIONS 6500MXPLC

NOTE:

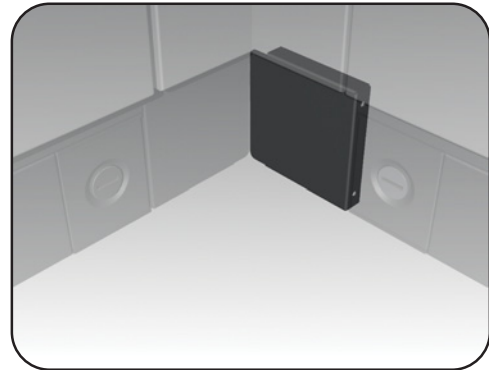
(i) Corner cabinets are ordered separately and are based on the standard 6500 MX frame and covers. Depending on fixed cover or door configurations (hinge right vs. hinge left) one 6500 MXCC spacer kit may be sufficient to meet the requirements. (Refer to adjacent image)

(ii) Two depths possible for line-ups. Can require two different adaptors.



Plinth spacer, corner cabinet

The 6500 MXPLC corner cabinet plinth spacer kits are cosmetic accessories used to ensure the esthetically pleasing looks are retained at a 90° bend within a line-up. The spacers are standard 100mm or 200mm high. Supplied in pairs with all installation hardware. To be used with 6500 MXPL plinths (refer to p.58)

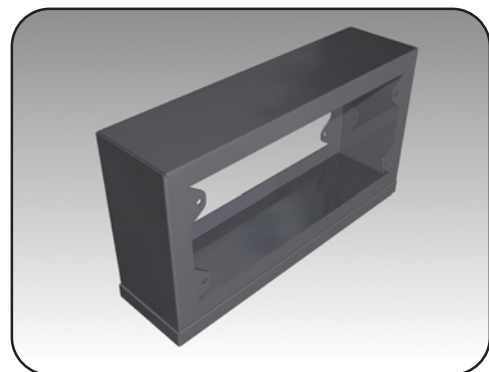


CATALOG NUMBER	FOR PLINTH HEIGHT (MM)
6500 MXPLC01	100
6500 MXPLC02	200

Solid top or bottom spacer, corner cabinet

The 6500 MXSCECC corner cabinet solid top or bottom spacer kits are cosmetic accessories used to ensure the esthetically pleasing looks are retained at a 90° bend within a line-up. The spacers are standard 100mm, 200mm, 300mm, or 400mm high.

Note: Due to varying depths, spacers are sold individually. All mounting h/w supplied in kits.



CATALOG NUMBER	FITS ON TROUGH HEIGHT	FITS ON TROUGH DEPTH
6500 MXSCECC--04	Replace the '—' by	400
6500 MXSCECC--05	the correct height	500
6500 MXSCECC--06	'01' = 100	600
6500 MXSCECC--08	'02' = 200	800
6500 MXSCECC--09	'03' = 300	900
6500 MXSCECC--10	'04' = 400	1000

Data subject to change without notice.