

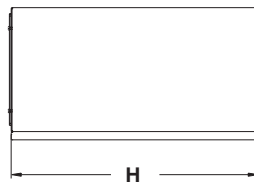
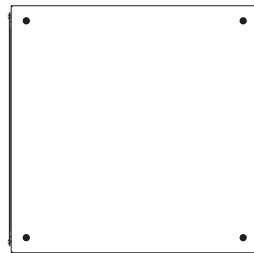
Solid top or bottom cable entry trough

The **6500 MXSCE** solid top or bottom cable entry trough is installed on the top or base of a Mtrx cabinet. It is made of steel or stainless steel. This variable height symmetric trough was developed for applications where cables, bus bars or pipes are to

be run into the enclosure via the top or bottom without having to order either a separate top or bottom cover. The troughs are an extension of the controlled volume of the enclosure, retaining the NEMA 12 rating. Supplied standard with: (i) all installation

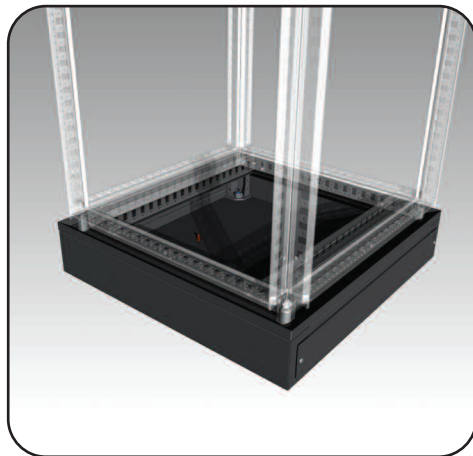
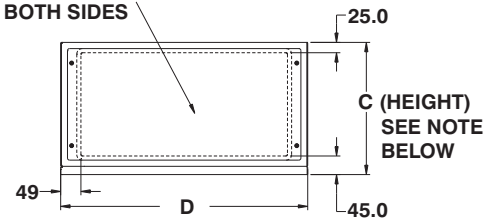
hardware; (ii) sealing plugs in eye bolt or leveling feet mounting holes. Standard finish is powder coated RAL7011 Sandtex dark gray

Note: End plates are sold separately. Refer to page 64



ORIENTATION SHOWN IS FOR TOP INSTALLATION. ROTATE 180° FOR BOTTOM INSTALLATION

OPENING CLEARANCE ON BOTH SIDES



CATALOG NUMBER	NOMINAL		CATALOG NUMBER	NOMINAL	
	H	D		H	D
6500 MXSCE010404	400	400	6500 MXSCE010808	800	800
6500 MXSCE010405	400	500	6500 MXSCE010809	800	900
6500 MXSCE010406	400	600	6500 MXSCE010810	800	1000
6500 MXSCE010408	400	800	6500 MXSCE010812	800	1200
6500 MXSCE010604	600	400	6500 MXSCE010904	900	400
6500 MXSCE010605	600	500	6500 MXSCE010905	900	500
6500 MXSCE010606	600	600	6500 MXSCE010906	900	600
6500 MXSCE010608	600	800	6500 MXSCE010908	900	800
6500 MXSCE010609	600	900	6500 MXSCE011004	1000	400
6500 MXSCE010610	600	1000	6500 MXSCE011005	1000	500
6500 MXSCE010612	600	1200	6500 MXSCE011006	1000	600
6500 MXSCE010704	700	400	6500 MXSCE011008	1000	800
6500 MXSCE010705	700	500	6500 MXSCE011204	1200	400
6500 MXSCE010706	700	600	6500 MXSCE011205	1200	500
6500 MXSCE010708	700	800	6500 MXSCE011206	1200	600
6500 MXSCE010709	700	900	6500 MXSCE011208	1200	800
6500 MXSCE010710	700	1000	6500 MXSCE011604	1600	400
6500 MXSCE010712	700	1200	6500 MXSCE011605	1600	500
6500 MXSCE010804	800	400	6500 MXSCE011606	1600	600
6500 MXSCE010805	800	500	6500 MXSCE011608	1600	800
6500 MXSCE010806	800	600	6500 MXSCE011805	1800	500
			6500 MXSCE011806	1800	600

Default HEIGHT 'C' is 100mm, for 200mm, 300mm, 400mm height replace '01' in part number by '02', '03', '04' respectively.
Default installation is on top, for bottom installation add suffix 'B'

i.e.: 6500 MXSCE010806 → 100mm high installed on top
6500 MXSCE030806B → 300mm high installed on bottom

Data subject to change without notice.

