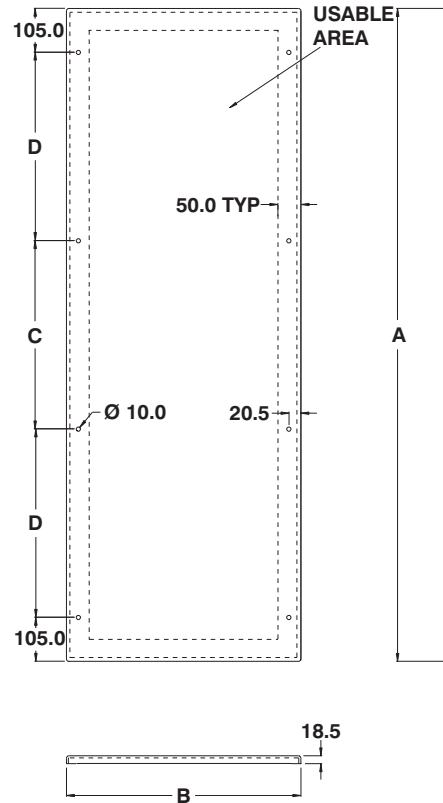
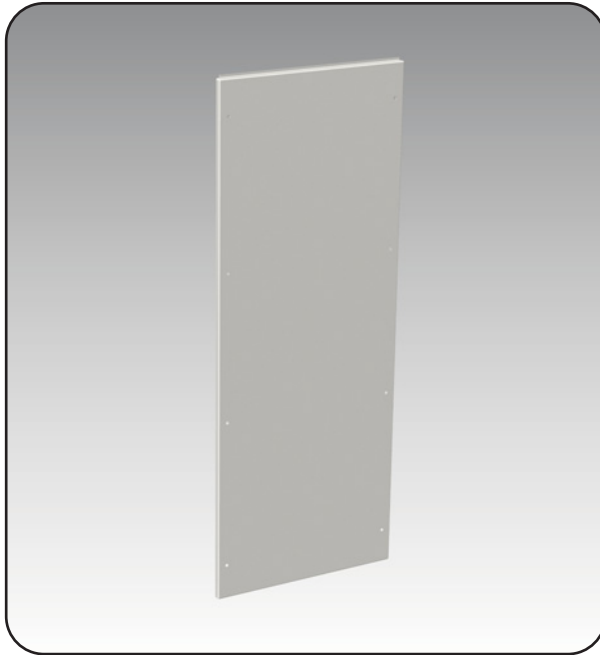


Single piece back cover

The **6500 MXR back covers** are made to be installed on the back and/or front face of a Mtrx cabinet. They are made of steel or stainless steel.

The 6500 MXR consists of one back cover, ribbed mounting brackets and installation hardware. A robotically poured-in place gasket ensures a complete

and durable seal. The covers are finished with heat fused polyester powder, electrostatically applied on a phosphatized base. Finish is RAL7035 textured light gray.



CATALOG NUMBER	NOMINAL		DIMENSIONS			
	H	W	A	B	C	D
6500 MXR0706	700	600	660	595	-	-
6500 MXR0708	700	800	660	795	-	-
6500 MXR0712	700	1200	660	1195	-	-
6500 MXR1406	1400	600	1360	595	450	350
6500 MXR1407	1400	700	1360	695	450	350
6500 MXR1408	1400	800	1360	795	450	350
6500 MXR1412	1400	1200	1360	1195	450	350
6500 MXR1604	1600	400	1560	395	450	450
6500 MXR1606	1600	600	1560	595	450	450
6500 MXR1608	1600	800	1560	795	450	450
6500 MXR1609	1600	900	1560	895	450	450
6500 MXR1610	1600	1000	1560	995	450	450
6500 MXR1612	1600	1200	1560	1195	450	450
6500 MXR1804	1800	400	1760	395	500	525
6500 MXR1806	1800	600	1760	595	500	525
6500 MXR1808	1800	800	1760	795	500	525
6500 MXR1809	1800	900	1760	895	500	525

CATALOG NUMBER	NOMINAL		DIMENSIONS			
	H	W	A	B	C	D
6500 MXR1810	1800	1000	1760	995	500	525
6500 MXR1812	1800	1200	1760	1195	500	525
6500 MXR2004	2000	400	1960	395	600	575
6500 MXR2006	2000	600	1960	595	600	575
6500 MXR2007	2000	700	1960	695	600	575
6500 MXR2008	2000	800	1960	795	600	575
6500 MXR2009	2000	900	1960	895	600	575
6500 MXR2010	2000	1000	1960	995	600	575
6500 MXR2012	2000	1200	1960	1195	600	575
6500 MXR2204	2200	400	2160	395	650	650
6500 MXR2206	2200	600	2160	595	650	650
6500 MXR2207	2200	700	2160	695	650	650
6500 MXR2208	2200	800	2160	795	650	650
6500 MXR2209	2200	900	2160	895	650	650
6500 MXR2210	2200	1000	2160	995	650	650
6500 MXR2212	2200	1200	2160	1195	650	650

Data subject to change without notice.

