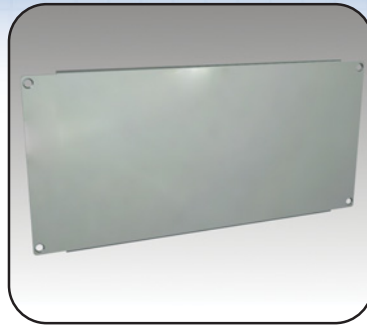


Cable entry trough mounting panel

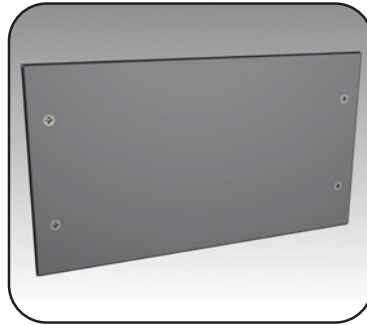
The **6500 MXMSCE cable entry mounting panel** is installed directly within the cable entry trough. Its mounting surface aligns itself with that of the cabinets inner mounting panel (6500 MXM p.39). The panel is made of unfinished 11ga galvanized steel. Installation h/w supplied. (Sold in packs of one)



CATALOG NUMBER	FIT ON TROUGH HEIGHT C	FIT IN WIDTH
6500 MXMSCE--04	Replace the	400
6500 MXMSCE--06	'-' by the	600
6500 MXMSCE--07	correct	700
6500 MXMSCE--08	height	800
6500 MXMSCE--09		900
6500 MXMSCE--10	'01' = 100	1000
6500 MXMSCE--12	'02' = 200	1200
6500 MXMSCE--16	'03' = 300	1600
6500 MXMSCE--18	'04' = 400	1800

Solid end plate

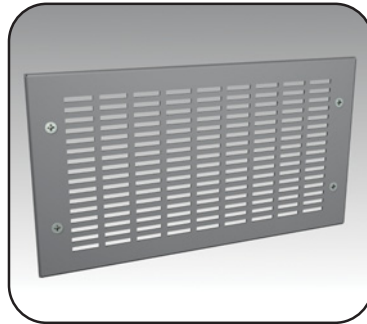
The **6500 MXSCEP solid end plate** is installed at either ends of the cable entry trough. The plate is supplied with all installation hardware and gasket Standard finish RAL7035 textured light gray. (Sold in packs of one)



CATALOG NUMBER	FIT ON TROUGH HEIGHT C	FIT ON TROUGH DEPTH
6500 MXSCEP--04	Replace the	400
6500 MXSCEP--05	'-' by the	500
6500 MXSCEP--06	correct height	600
6500 MXSCEP--08	'01' = 100	800
6500 MXSCEP--09	'02' = 200	900
6500 MXSCEP--10	'03' = 300	1000
	'04' = 400	

Ventilated end plate

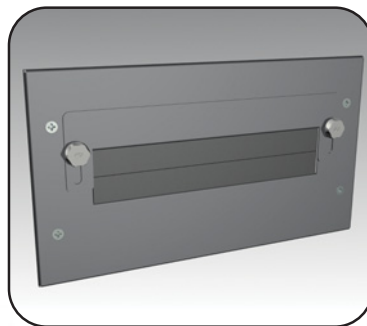
The **6500 MXSCEV ventilated end plate** is installed at either ends of the cable entry trough. The plate is perforated for ventilation and supplied with all installation hardware. Standard finish RAL7035 textured light gray. (Sold in packs of one)



CATALOG NUMBER	FIT ON TROUGH HEIGHT C	FIT ON TROUGH DEPTH
6500 MXSCEV--04	Replace the	400
6500 MXSCEV--05	'-' by the	500
6500 MXSCEV--06	correct height	600
6500 MXSCEV--08	'01' = 100	800
6500 MXSCEV--09	'02' = 200	900
6500 MXSCEV--10	'03' = 300	1000
	'04' = 400	

Cable entry end plate

The **6500 MXSCEC cable entry end plate** is installed at either ends of the cable entry trough. The plate is supplied with all installation hardware, adjustable cable clamping plate and gaskets. Standard finish RAL7035 textured light gray. (Sold in packs of one)



CATALOG NUMBER	FIT ON TROUGH HEIGHT C	FIT ON TROUGH DEPTH
6500 MXSCEC--04	Replace the	400
6500 MXSCEC--05	'-' by the	500
6500 MXSCEC--06	correct height	600
6500 MXSCEC--08	'01' = 100	800
6500 MXSCEC--09	'02' = 200	900
6500 MXSCEC--10	'03' = 300	1000
	'04' = 400	

Data subject to change without notice.

