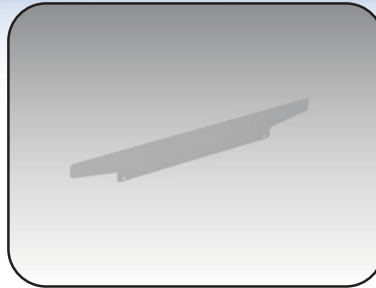


Filler panel for rack angles

The **6500 MXFPR** filler panel for rack angles is used to completely fill the rack mounting space for 19" racks at the top and bottom of the cabinet.

The kit includes two filler panels and all installation hardware.

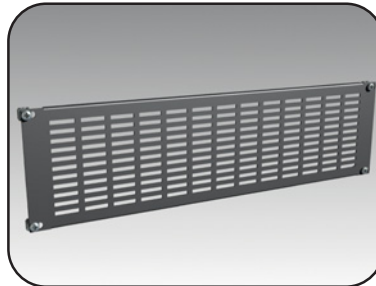


CATALOG NUMBER	USE WITH RACK WIDTH
6500 MXFPR19	19"

* Add suffix 'AL' for aluminium.
ADD SUFFIX 'X' for textured black RAL 9005 finish.

19" vented rack panels

The **6500 MXMRV** vented 19" rack panels are used with Mtrx or Streamline racks and are available in steel and aluminum. The panels are standard powder coated RAL7011 sandtex dark gray. **For finish in textured black RAL9005 add suffix "x".**

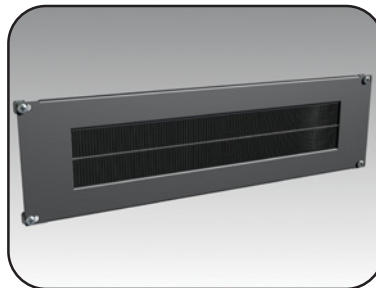


CATALOG NUMBER	NOMINAL WIDTH	RACK UNITS
6500 MXMRV0123	23"	1
6500 MXMRV0223	23"	2
6500 MXMRV0323	23"	3
6500 MXMRV0423	23"	4
6500 MXMRV0523	23"	5
6500 MXMRV0623	23"	6
6500 MXMRV0723	23"	7
6500 MXMRV0823	23"	8
6500 MXMRV0923	23"	9
6500 MXMRV1023	23"	10
6500 MXMRV1123	23"	11
6500 MXMRV1223	23"	12
6500 MXMRV1623	23"	16

* Add suffix 'AL' for aluminium.
ADD SUFFIX 'X' for textured black RAL 9005 finish.

19" cable entry rack panel

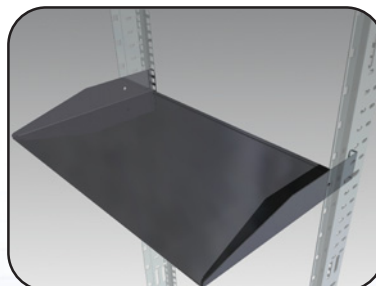
The **6500 MXMRC** cable entry panels are used to run cables from front to back while retaining a pleasing appearance and dust barrier. The construction is sheet-metal with a brush insert. The panels are standard powder coated RAL7011 sandtex dark gray. **For finish in textured black RAL9005 add suffix "x".**



CATALOG NUMBER	RACK UNITS
6500 MXMRC1	1
6500 MXMRC2	2

19" rack component shelf (light weight)

The **6500 MXLCS** component shelves are cost effective, light weight shelved to be used with one rack angle pair. The shelves are standard powder coated RAL7011 sandtex dark gray. **For finish in textured black RAL9005 add suffix "x".**



CATALOG NUMBER	SHELF DEPTH (mm)
6500 MXLCS02	200
6500 MXLCS03	300
6500 MXLCS04	400

Data subject to change without notice.

