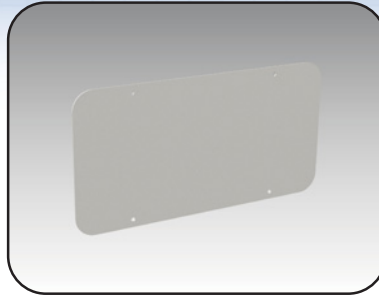


Solid closure plate

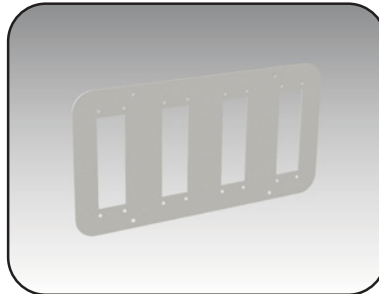
The **6500 MXCESP** solid closure plates are used to seal the top and bottom of a cable entry cabinet. They are made of steel and are finished with RAL7035 textured gray powder coating.



| CATALOG NUMBER | FITS CABLE ENTRY CABINETS WITH A DEPTH OF |
|----------------|---|
| 6500 MXCESP04 | 400mm |
| 6500 MXCESP05 | 500mm |
| 6500 MXCESP06 | 600mm |
| 6500 MXCESP08 | 800mm |
| 6500 MXCESP09 | 900mm |

Closure plate with DIN cut-out

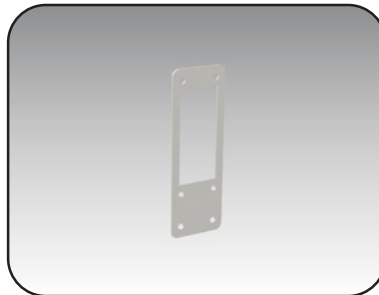
The **6500 MXCEDP** closure plates with DIN cut-outs are used to seal the top and bottom of a cable entry cabinet. The 24-pin cut-outs can be sealed or adapted using the adaptors below. They are made of steel and are finished with RAL7035 textured gray powder coating.



| CATALOG NUMBER | FITS CABLE ENTRY CABINETS WITH A DEPTH OF |
|----------------|---|
| 6500 MXCEDP04 | 400mm |
| 6500 MXCEDP05 | 500mm |
| 6500 MXCEDP06 | 600mm |
| 6500 MXCEDP08 | 800mm |
| 6500 MXCEDP09 | 900mm |

Closure plate adaptors

The **6500 MXCEAP** are used with 6500 MXCEDP cable entry closing plates to seal unused cut-outs or to adapt to different cut-out sizes. They are made of steel and are finished with RAL7035 textured gray powder coating.

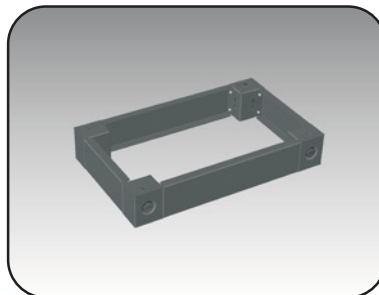


| CATALOG NUMBER | ADAPTS FROM 24 PIN CUT-OUT TO |
|----------------|-------------------------------|
| 6500 MXCEAP00 | Blank cover |
| 6500 MXCEAP16 | 16 pin cut-out |
| 6500 MXCEAP10 | 10 pin cut-out |
| 6500 MXCEAP06 | 6 pin cut-out |

Base plinths for cable entry cabinets

The **6500 MXCEPL** are installed under cable entry cabinets. They are made of steel.

The 6500 MXCEPL consists of four plinth blocks, four plinth panels and all installation hardware. The plinths are finished with heat fused polyester powder. The finish is RAL7011 sandtex dark gray.



| CATALOG NUMBER | FITS CABLE ENTRY CABINETS WITH A DEPTH OF |
|----------------|---|
| 6500 MXCEPL04 | 400mm |
| 6500 MXCEPL05 | 500mm |
| 6500 MXCEPL06 | 600mm |
| 6500 MXCEPL08 | 800mm |
| 6500 MXCEPL09 | 900mm |

Data subject to change without notice.