

JIC enclosures - Clear cover

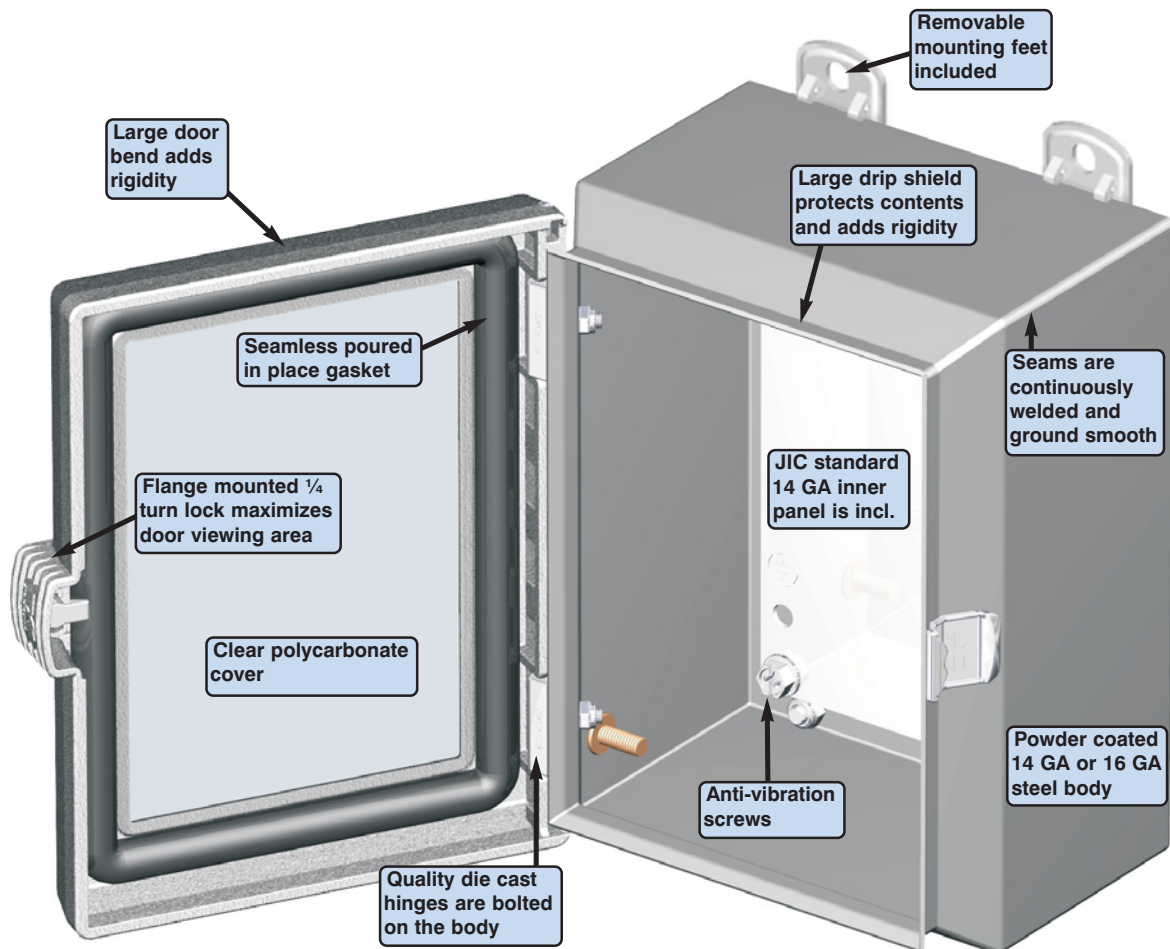
The 5412 ESCHV are used indoors or outdoors to protect the enclosed controls from dust, dirt, oil and water splashing. The enclosure bodies are made of quality 16 GA steel, with corner seams continuously welded. The cover is made of clear polycarbonate. The opening has a curled lip around all sides to prevent dripping water from entering the enclosure when the door is open, it also increases rigidity. A high quality robotically poured-in-

place seamless gasket ensures a complete and durable water tight seal. The enclosures feature die cast hinges which are bound to the clear cover by a removable hinge pin.

EXM's exclusive flange-mounted ¼ turn locking system ensures positive closing while leaving a full clear viewing area on the door. Each enclosure comes complete with a 14 GA inner panel which mounts on weld nuts. The enclosure can be

internally mounted or externally mounted using the included die cast wall mounting feet. These feet have oblong holes to facilitate installation. Enclosures and panels are finished with heat fused polyester powder, electrostatically applied on a pretreated base. Box is ANSI/ASA 61 gray, panel is white (other colors available).

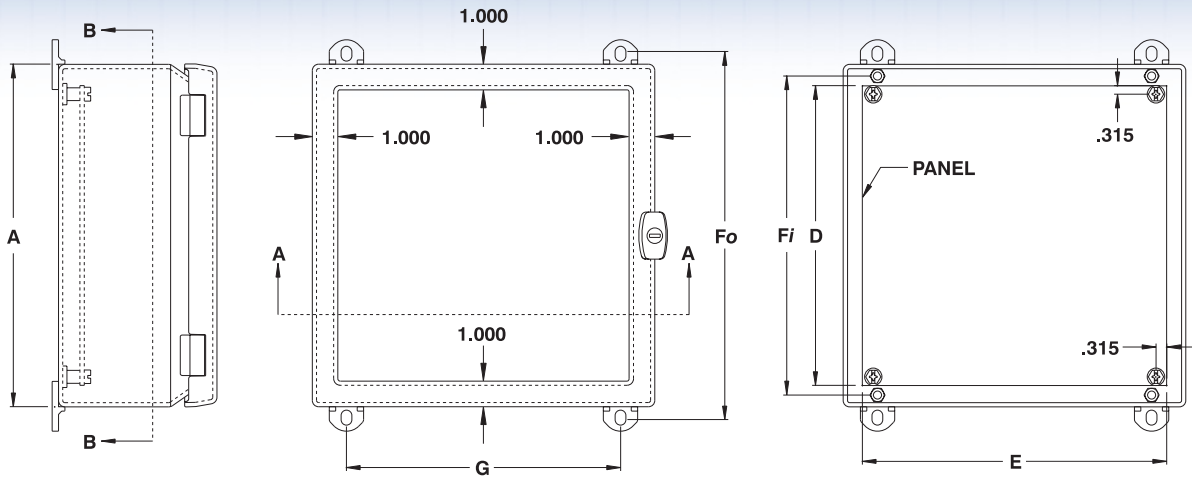
**CSA Certified / UL Listed
NEMA/EEMAC 4-12 / IP66**



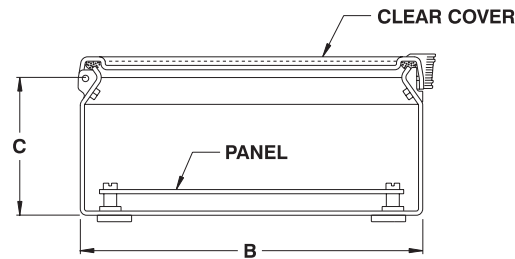
The 5412 ESCHV -
Exclusive clear cover enclosures

Data subject to
change without
notice.



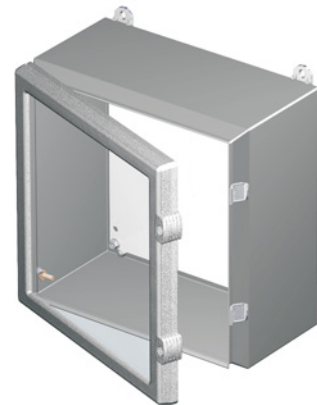


SECTION B-B



SECTION A-A

CATALOG NUMBER	DIMENSIONS								SHIP WGHT LBS.
	A	B	C	D	E	Fo	Fi	G	
5412 ESCHV100804	10	8	4	2.88	6.88	10.75	9.312	6	8
5412 ESCHV121205	12	12	5	10.88	10.88	12.75	11.312	10	18
5412 ESCHV100806	10	8	6	2.88	6.88	10.75	9.312	6	10
5412 ESCHV121206	12	12	6	10.88	10.88	12.75	11.312	10	18
5412 ESCHV161206	16	12	6	14.88	10.88	16.75	15.312	10	19
5412 ESCHV161208	16	12	8	14.88	10.88	16.75	15.312	10	20



Data subject to change without notice.

