

Weatherproof Junction Boxes

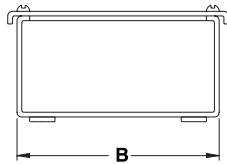
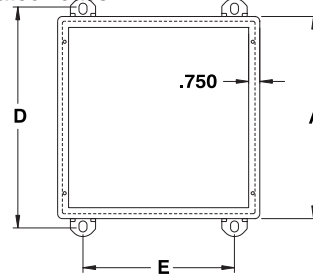
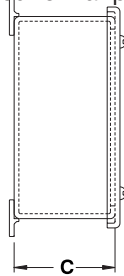
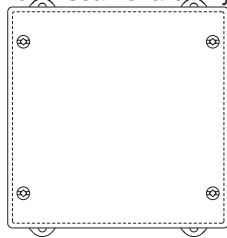
The 1300 DWPF are used as junction boxes in outdoor installations or indoors where dripping water is a problem. These enclosures are designed to protect equipment against rain, sleet and snow. Enclosures are made from 16 GA or 14 GA steel. The box seams are

continuously welded to prevent rain, sleet or snow from entering and the oil resistant high quality gasket ensures integrity. Four external mounting holes are provided. Enclosures are finished with heat fused powder paint, electrostatically applied on a pretreated base.

Box is ANSI/ASA 61 gray (other colors available).

CSA Certified / UL Listed.
NEMA/EEMAC 3 / IP64

Refer to p.727 to validate choice of substrate for the application



| CATALOG NUMBER | DIMENSIONS | | | | | SHIP WTGT LBS. |
|-----------------|------------|----|----|--------|----|----------------|
| | A | B | C | D | E | |
| 1300 DWPF040403 | 4 | 4 | 3 | 4.500 | 2 | 2 |
| 1300 DWPF060403 | 6 | 4 | 3 | 6.500 | 2 | 3 |
| 1300 DWPF060404 | 6 | 4 | 4 | 6.500 | 2 | 5 |
| 1300 DWPF060604 | 6 | 6 | 4 | 6.500 | 4 | 5 |
| 1300 DWPF080604 | 8 | 6 | 4 | 8.500 | 4 | 6 |
| 1300 DWPF080804 | 8 | 8 | 4 | 8.500 | 6 | 8 |
| 1300 DWPF081004 | 8 | 10 | 4 | 8.500 | 8 | 10 |
| 1300 DWPF100804 | 10 | 8 | 4 | 10.500 | 6 | 10 |
| 1300 DWPF101004 | 10 | 10 | 4 | 10.500 | 8 | 14 |
| 1300 DWPF120604 | 12 | 6 | 4 | 12.500 | 4 | 14 |
| 1300 DWPF121004 | 12 | 10 | 4 | 12.500 | 8 | 18 |
| 1300 DWPF121204 | 12 | 12 | 4 | 12.500 | 10 | 6 |
| 1300 DWPF060605 | 6 | 6 | 5 | 6.500 | 4 | 7 |
| 1300 DWPF080605 | 8 | 6 | 5 | 8.500 | 4 | 14 |
| 1300 DWPF101205 | 10 | 12 | 5 | 10.500 | 10 | 8 |
| 1300 DWPF060606 | 6 | 6 | 6 | 6.500 | 4 | 7 |
| 1300 DWPF080606 | 8 | 6 | 6 | 8.500 | 4 | 14 |
| 1300 DWPF080806 | 8 | 8 | 6 | 8.500 | 4 | 12 |
| 1300 DWPF100806 | 10 | 8 | 6 | 10.500 | 6 | 12 |
| 1300 DWPF101006 | 10 | 10 | 6 | 10.500 | 8 | 14 |
| 1300 DWPF121206 | 12 | 12 | 6 | 12.500 | 10 | 18 |
| 1300 DWPF121406 | 12 | 14 | 6 | 12.500 | 12 | 19 |
| 1300 DWPF140806 | 14 | 8 | 6 | 14.500 | 6 | 10 |
| 1300 DWPF141206 | 14 | 12 | 6 | 14.500 | 10 | 19 |
| 1300 DWPF141606 | 14 | 16 | 6 | 14.500 | 14 | 23 |
| 1300 DWPF161006 | 16 | 10 | 6 | 16.500 | 8 | 15 |
| 1300 DWPF161206 | 16 | 12 | 6 | 16.500 | 10 | 24 |
| 1300 DWPF161406 | 16 | 14 | 6 | 16.500 | 12 | 23 |
| 1300 DWPF161606 | 16 | 16 | 6 | 16.500 | 14 | 25 |
| 1300 DWPF181806 | 18 | 18 | 6 | 18.500 | 16 | 34 |
| 1300 DWPF241806 | 24 | 18 | 6 | 24.500 | 16 | 46 |
| 1300 DWPF242406 | 24 | 24 | 6 | 24.500 | 22 | 53 |
| 1300 DWPF121008 | 12 | 10 | 8 | 12.500 | 8 | 16 |
| 1300 DWPF141208 | 14 | 12 | 8 | 14.500 | 10 | 20 |
| 1300 DWPF161208 | 16 | 12 | 8 | 16.500 | 10 | 26 |
| 1300 DWPF161408 | 16 | 14 | 8 | 16.500 | 12 | 24 |
| 1300 DWPF242408 | 24 | 24 | 8 | 24.500 | 22 | 58 |
| 1300 DWPF303008 | 30 | 30 | 8 | 30.500 | 28 | 72 |
| 1300 DWPF161410 | 16 | 14 | 10 | 16.500 | 12 | 26 |
| 1300 DWPF242410 | 24 | 24 | 10 | 24.500 | 22 | 62 |
| 1300 DWPF242412 | 24 | 24 | 12 | 24.500 | 22 | 68 |
| 1300 DWPF363612 | 36 | 36 | 12 | 36.500 | 34 | 100 |

† For painted stainless steel, add suffix 'P' to the catalog number (i.e. : 1300DWPF...P)

‡ For stainless steel, add suffix 'SS' to the catalog number (i.e. : 1300 DWPF...SS)

Data subject to change without notice.

