

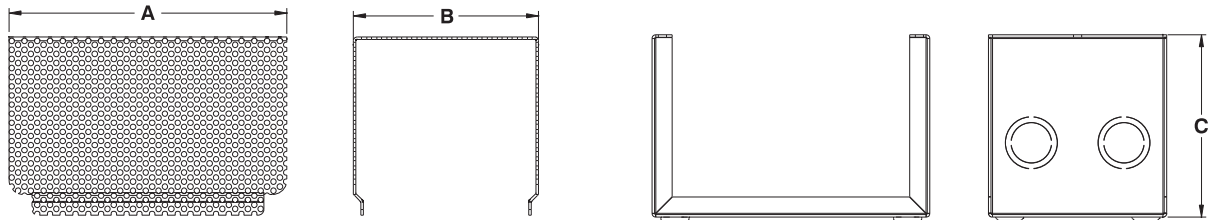
Ventilated enclosures

The 1100 VE ventilated enclosures are used for general purposes whenever the contents require ventilation. The enclosures are made of 18 GA steel. There are knockouts at the top and bottom, and the two sides are

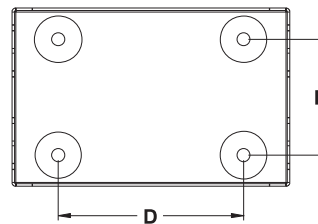
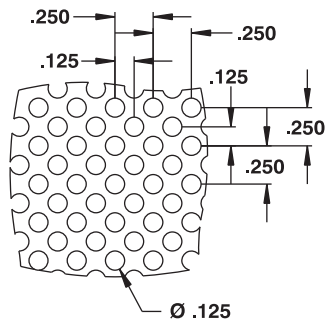
fully ventilated. Enclosures are also available non-ventilated (add suffix "N" to catalog number). Mounting holes are provided in the back and the cover are fixed with screws. Enclosures are finished with heat

fused powder paint, electrostatically applied on a pretreated base. Box is ANSI/ASA 61 gray (other colors available).

Refer to p.727 to validate choice of substrate for the application

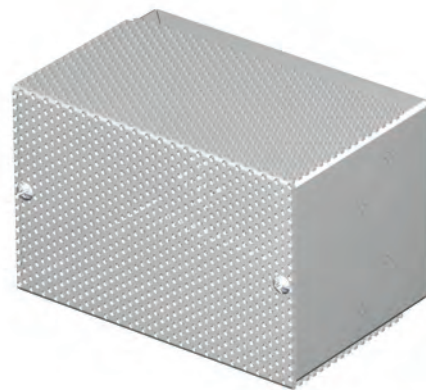


PERFORATION DETAIL



CATALOG NUMBER	DIMENSIONS					SHIP WGHT LBS.
	A	B	C	D	E	
1100 VE060404	6	4	4	4.000	2.500	2
1100 VE100404	10	4	4	7.000	2.500	3
1100 VE100606	10	6	6	7.000	4.500	4
1100 VE110707	11	7	7	8.000	5.500	6
1100 VE120808	12	8	8	9.000	6.500	7
1100 VE151008	15	10	8	12.000	8.500	10
1100 VE201008	20	10	8	17.000	8.500	12
1100 VE201010	20	10	10	17.000	8.500	14

* Enclosures are also available non-ventilated; add suffix 'N' to the catalog number.



p.472

<http://www.exmweb.com>

1-800-363-2423

Fax : 450-979-4626

info@exmweb.com



Data subject to change without notice.