

## Bus bar splitter troughs with copper bus bars

The 1100 BTCU bus bar splitter troughs are used indoors to house bus bars for power distribution. Troughs and covers are made from 14 GA steel. Four external mounting holes are provided for easy fixation. Troughs are available in configurations of 3, 4 or 5 copper bus bars

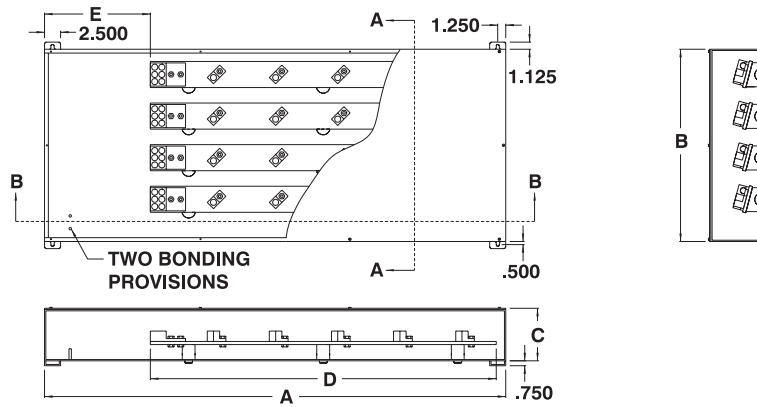
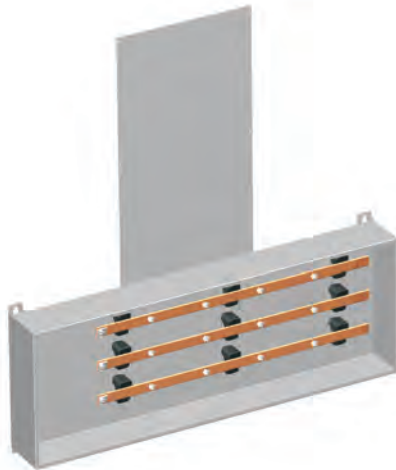
that mount on slanted insulators. There are no knockouts. Bus bars are also available drilled and tapped 1/4 - 20 at 6" interval. Add suffix 'DT' to the catalog number. (ie. 1100BTCU...DT). Troughs are finished with heat fused powder paint, electrostatically applied on a pretreated base.

Box is ANSI/ASA 61 gray.

**Note: Lugs must be ordered separately.**

**CSA Certified  
NEMA/EEMAC 1 / IP30**

**Refer to p.727 to validate choice of substrate for the application**



NOMINAL AMPACITY	MAIN LUGS	BRANCH LUGS		BAR CROSS SECTION	LENGTHS AVAILABLE (FEET)	
		QTY.	WIRES			
225	200	1	250MCM	2 #2	1/8 X 1	3-4-5-6-7-8-9
400	340	1	600MCM	3 2/0	3/16 X 1 1/2	3-4-5-6-7-8-9-10
600	500	2	350MCM	4 2/0	1/4 X 2	3-4-5-6-7-8-9-10-11-12
800	680	2	600MCM	5 2/0	1/4 X 3	3-4-5-6-7-8-9-10-11-12
1000	890	2	1000MCM	4 250MCM	1/4 X 4	5-6-7-8-9-10-11-12
1200	1020	3	600MCM	5 250MCM	5/16 X 4	5-6-7-8-9-10-11-12
1600	1335	3	1000MCM	4 250MCM	1/2 X 4	5-6-7-8-9-10-11-12
2000	1700	5	600MCM	7 350MCM	1/2 X 5	6-7-8-9-10-11-12
2500	2040	6	600MCM	8 350MCM	1/2 X 6	6-7-8-9-10-11-12

CU NOM. AMP	3 WIRES			4 WIRES			5 WIRES							
	CATALOG #	A	B	C	CATALOG #	A	B	C	CATALOG #	A	B	C	D	E
225	1100 BTCU03203	36	18	6	1100 BTCU03204	36	22	7	1100 BTCU03205	36	26	7	27	7.75
225	1100 BTCU04203	48	18	6	1100 BTCU04204	48	22	7	1100 BTCU04205	48	26	7	36	7.75
225	1100 BTCU05203	60	18	6	1100 BTCU05204	60	22	7	1100 BTCU05205	60	26	7	45	13.75
225	1100 BTCU06203	72	18	6	1100 BTCU06204	72	22	7	1100 BTCU06205	72	26	7	54	16.75
225	1100 BTCU07203	84	18	6	1100 BTCU07204	84	22	7	1100 BTCU07205	84	26	7	63	16.75
225	1100 BTCU08203	96	18	6	1100 BTCU08204	96	22	7	1100 BTCU08205	96	26	7	72	16.75
225	1100 BTCU09203	108	18	6	1100 BTCU09204	108	22	7	1100 BTCU09205	108	26	7	81	16.75
400	1100 BTCU03403	36	18	6	1100 BTCU03404	36	22	7	1100 BTCU03405	36	26	7	27	7.75
400	1100 BTCU04403	48	18	6	1100 BTCU04404	48	22	7	1100 BTCU04405	48	26	7	36	7.75
400	1100 BTCU05403	60	18	6	1100 BTCU05404	60	22	7	1100 BTCU05405	60	26	7	45	13.75
400	1100 BTCU06403	72	18	6	1100 BTCU06404	72	22	7	1100 BTCU06405	72	26	7	54	16.75
400	1100 BTCU07403	84	18	6	1100 BTCU07404	84	22	7	1100 BTCU07405	84	26	7	63	16.75
400	1100 BTCU08403	96	18	6	1100 BTCU08404	96	22	7	1100 BTCU08405	96	26	7	72	16.75
400	1100 BTCU09403	108	18	6	1100 BTCU09404	108	22	7	1100 BTCU09405	108	26	7	81	16.75
400	1100 BTCU10403	120	18	6	1100 BTCU10404	120	22	7	1100 BTCU10405	120	26	7	90	16.75
600	1100 BTCU03603	36	24	8	1100 BTCU03604	36	30	8	1100 BTCU03605	36	36	8	27	7.75
600	1100 BTCU04603	48	24	8	1100 BTCU04604	48	30	8	1100 BTCU04605	48	36	8	36	7.75
600	1100 BTCU05603	60	24	8	1100 BTCU05604	60	30	8	1100 BTCU05605	60	36	8	45	13.75
600	1100 BTCU06603	72	24	8	1100 BTCU06604	72	30	8	1100 BTCU06605	72	36	8	54	16.75
600	1100 BTCU07603	84	24	8	1100 BTCU07604	84	30	8	1100 BTCU07605	84	36	8	63	16.75

Data subject to change without notice.



p.478

p.479

p.472

p.239

p.239

# ELECTRICAL DISTRIBUTION

# 1100 BTCU

CU NOM. AMP	3 WIRES				4 WIRES				5 WIRES					
	CATALOG #	A	B	C	CATALOG #	A	B	C	CATALOG #	A	B	C	D	E
600	1100 BTCU08603	96	24	8	1100 BTCU08604	96	30	8	1100 BTCU08605	96	36	8	72	16.75
600	1100 BTCU09603	108	24	8	1100 BTCU09604	108	30	8	1100 BTCU09605	108	36	8	81	16.75
600	1100 BTCU10603	120	24	8	1100 BTCU10604	120	30	8	1100 BTCU10605	120	36	8	90	16.75
600	1100 BTCU11603	132	24	8	1100 BTCU11604	132	30	8	1100 BTCU11605	132	36	8	99	16.75
600	1100 BTCU12603	144	24	8	1100 BTCU12604	144	30	8	1100 BTCU12605	144	36	8	108	16.75
800	1100 BTCU03803	36	24	8	1100 BTCU03804	36	30	8	1100 BTCU03805	36	36	8	27	7.75
800	1100 BTCU04803	48	24	8	1100 BTCU04804	48	30	8	1100 BTCU04805	48	36	8	36	7.75
800	1100 BTCU05803	60	24	8	1100 BTCU05804	60	30	8	1100 BTCU05805	60	36	8	45	13.75
800	1100 BTCU06803	72	24	8	1100 BTCU06804	72	30	8	1100 BTCU06805	72	36	8	54	16.75
800	1100 BTCU07803	84	24	8	1100 BTCU07804	84	30	8	1100 BTCU07805	84	36	8	63	16.75
800	1100 BTCU08803	96	24	8	1100 BTCU08804	96	30	8	1100 BTCU08805	96	36	8	72	16.75
800	1100 BTCU09803	108	24	8	1100 BTCU09804	108	30	8	1100 BTCU09805	108	36	8	81	16.75
800	1100 BTCU10803	120	24	8	1100 BTCU10804	120	30	8	1100 BTCU10805	120	36	8	90	16.75
800	1100 BTCU11803	132	24	8	1100 BTCU11804	132	30	8	1100 BTCU11805	132	36	8	99	16.75
800	1100 BTCU12803	144	24	8	1100 BTCU12804	144	30	8	1100 BTCU12805	144	36	8	108	16.75
1000	1100 BTCU051003	60	24	8	1100 BTCU051004	60	30	8	1100 BTCU051005	60	36	8	45	13.75
1000	1100 BTCU061003	72	24	8	1100 BTCU061004	72	30	8	1100 BTCU061005	72	36	8	54	16.75
1000	1100 BTCU071003	84	24	8	1100 BTCU071004	84	30	8	1100 BTCU071005	84	36	8	63	16.75
1000	1100 BTCU081003	96	24	8	1100 BTCU081004	96	30	8	1100 BTCU081005	96	36	8	72	16.75
1000	1100 BTCU091003	108	24	8	1100 BTCU091004	108	30	8	1100 BTCU091005	108	36	8	81	16.75
1000	1100 BTCU101003	120	24	8	1100 BTCU101004	120	30	8	1100 BTCU101005	120	36	8	90	16.75
1000	1100 BTCU111003	132	24	8	1100 BTCU111004	132	30	8	1100 BTCU111005	132	36	8	99	16.75
1000	1100 BTCU121003	144	24	8	1100 BTCU121004	144	30	8	1100 BTCU121005	144	36	8	108	16.75
1200	1100 BTCU051203	60	24	8	1100 BTCU051204	60	30	8	1100 BTCU051205	60	36	8	45	13.75
1200	1100 BTCU061203	72	24	8	1100 BTCU061204	72	30	8	1100 BTCU061205	72	36	8	54	16.75
1200	1100 BTCU071203	84	24	8	1100 BTCU071204	84	30	8	1100 BTCU071205	84	36	8	63	16.75
1200	1100 BTCU081203	96	24	8	1100 BTCU081204	96	30	8	1100 BTCU081205	96	36	8	72	16.75
1200	1100 BTCU091203	108	24	8	1100 BTCU091204	108	30	8	1100 BTCU091205	108	36	8	81	16.75
1200	1100 BTCU101203	120	24	8	1100 BTCU101204	120	30	8	1100 BTCU101205	120	36	8	90	16.75
1200	1100 BTCU111203	132	24	8	1100 BTCU111204	132	30	8	1100 BTCU111205	132	36	8	99	16.75
1200	1100 BTCU121203	144	24	8	1100 BTCU121204	144	30	8	1100 BTCU121205	144	36	8	108	16.75
1600	1100 BTCU051603	60	27	8	1100 BTCU051604	60	32	10	1100 BTCU051605	60	37	10	45	13.75
1600	1100 BTCU061603	72	27	8	1100 BTCU061604	72	32	10	1100 BTCU061605	72	37	10	54	16.75
1600	1100 BTCU071603	84	27	8	1100 BTCU071604	84	32	10	1100 BTCU071605	84	37	10	63	16.75
1600	1100 BTCU081603	96	27	8	1100 BTCU081604	96	32	10	1100 BTCU081605	96	37	10	72	16.75
1600	1100 BTCU091603	108	27	8	1100 BTCU091604	108	32	10	1100 BTCU091605	108	37	10	81	16.75
1600	1100 BTCU101603	120	27	8	1100 BTCU101604	120	32	10	1100 BTCU101605	120	37	10	90	16.75
1600	1100 BTCU111603	132	27	8	1100 BTCU111604	132	32	10	1100 BTCU111605	132	37	10	99	16.75
1600	1100 BTCU121603	144	27	8	1100 BTCU121604	144	32	10	1100 BTCU121605	144	37	10	108	16.75
2000	1100 BTCU062003	72	30	9	1100 BTCU062004	72	37	10	1100 BTCU062005	72	44	10	54	16.75
2000	1100 BTCU072003	84	30	9	1100 BTCU072004	84	37	10	1100 BTCU072005	84	44	10	63	16.75
2000	1100 BTCU082003	96	30	9	1100 BTCU082004	96	37	10	1100 BTCU082005	96	44	10	72	16.75
2000	1100 BTCU092003	108	30	9	1100 BTCU092004	108	37	10	1100 BTCU092005	108	44	10	81	16.75
2000	1100 BTCU102003	120	30	9	1100 BTCU102004	120	37	10	1100 BTCU102005	120	44	10	90	16.75
2000	1100 BTCU112003	132	30	9	1100 BTCU112004	132	37	10	1100 BTCU112005	132	44	10	99	16.75
2000	1100 BTCU122003	144	30	9	1100 BTCU122004	144	37	10	1100 BTCU122005	144	44	10	108	16.75
2500	1100 BTCU062503	72	30	9	1100 BTCU062504	72	37	10	1100 BTCU062505	72	44	10	54	16.75
2500	1100 BTCU072503	84	30	9	1100 BTCU072504	84	37	10	1100 BTCU072505	84	44	10	63	16.75
2500	1100 BTCU082503	96	30	9	1100 BTCU082504	96	37	10	1100 BTCU082505	96	44	10	72	16.75
2500	1100 BTCU092503	108	30	9	1100 BTCU092504	108	37	10	1100 BTCU092505	108	44	10	81	16.75
2500	1100 BTCU102503	120	30	9	1100 BTCU102504	120	37	10	1100 BTCU102505	120	44	10	90	16.75
2500	1100 BTCU112503	132	30	9	1100 BTCU112504	132	37	10	1100 BTCU112505	132	44	10	99	16.75
2500	1100 BTCU122503	144	30	9	1100 BTCU122504	144	37	10	1100 BTCU122505	144	44	10	108	16.75

Bus bar also available drilled and tapped 1/4 - 20 at 6" interval, add suffix 'DT' to the catalog number (ie. 1100 BTCU...DT)

**Note :**  
EXM lugs must be ordered separately.  
See pages 238-239 for different types of lugs.

Data subject to change without notice.

